



Invent · Improve · Inspire

# PRODUCT CATALOGUE



## **BrosMed Medical Co., Ltd.**

15th Building, SMES Venture Park, Songshan Lake Hi-Tech Industrial  
Development Zone, Dongguan523808, Guangdong, China

Tel: +86 (769) 2289 2018 Fax: +86 (769) 2289 2016

E-mail: [sales@brosmed.com](mailto:sales@brosmed.com)



## **BrosMed Medical B.V.**

Mgr. Buckxstraat 8, 6134 AP Sittard, The Netherlands

Office: +31(0) 850 140 901

Mail: [cs@brosmed.com](mailto:cs@brosmed.com)



# **One-Stop Provider for Interventional Vascular Therapy**

BrosMed Product Catalogue



# INTRODUCTION

Founded in 2012, BrosMed is a leading medical device multinational company specializing in R&D, production and global sales of high-performance intravascular interventional medical devices and accessories. BrosMed is headquartered in Songshan Lake High-tech Industrial Development Zone, Dongguan, Guangdong. We have four R&D centres (Labs) and three manufacturing sites in China, Europe and Asian Pacific.

BrosMed has more than 40 product series and 150+ product registration certificates worldwide. Our company's products cover the fields of cardiovascular intervention, peripheral intervention, vascular access, neurointervention and interventional accessories. We sell to thousands of hospitals in more than 60 countries and regions including China, the United States, Japan and Europe. "BrosMed" and "BrosMed Medical" have become world-renowned brands of high-quality intravascular interventional medical devices.



## Mission

"Inventing a movement, improving lives and inspiring everyone (Invent, Improve and Inspire)."



## Vision

To be one of the Chinese leading high-value disposable products providers , platform-based multinational medical device group.



# PRODUCT LIST

## 01 Cardiovascular Intervention

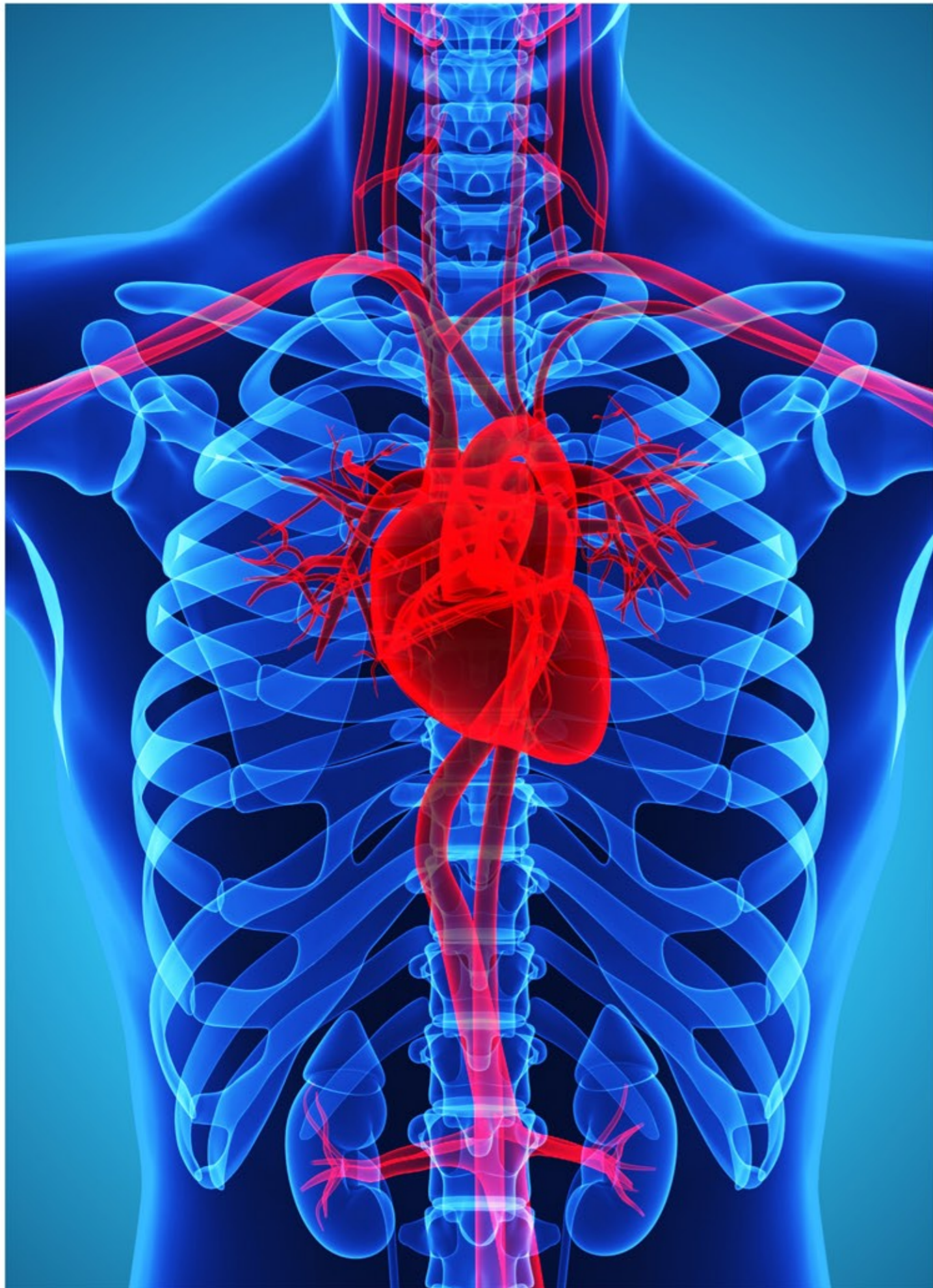
|   |    |
|---|----|
| POT™ PTCA NC Balloon Dilatation Catheter CE           | 03 |
| Alveo™ HP CTO Balloon Dilatation Catheter CE          | 04 |
| Wedge™ SC Scoring PTCA Balloon Dilatation Catheter CE | 05 |
| Wedge™ NC Scoring PTCA Balloon Dilatation Catheter CE | 06 |
| Artimes™ SC PTCA Balloon Dilatation Catheter CE FDA   | 07 |
| Apollo™ NC PTCA Balloon Dilatation Catheter CE FDA    | 08 |

## 02 Peripheral Intervention

|  |    |
|--|----|
| Tri-Wedge™ PTA Scoring Balloon Dilatation Catheter CE          | 11 |
| Polux™ SC 0.014" OTW PTA Balloon Dilatation Catheter CE FDA    | 13 |
| Minerva™ SC 0.018" OTW PTA Balloon Dilatation Catheter CE FDA  | 15 |
| Atropos™ SC 0.035" OTW PTA Balloon Dilatation Catheter CE FDA  | 17 |
| Castor™ NC 0.014" OTW PTA Balloon Dilatation Catheter CE FDA   | 19 |
| Achilles™ NC 0.018" OTW PTA Balloon Dilatation Catheter CE FDA | 21 |
| Hermes™ NC 0.035" OTW PTA Balloon Dilatation Catheter CE FDA   | 23 |
| Tiche™ NC 0.035" OTW PTA Balloon Dilatation Catheter           | 25 |

## 03 Interventional Accessories

|   |    |
|---|----|
| Pronavi™ Microcatheter CE                   | 29 |
| Conger™ Hydrophilic Guidewires CE           | 30 |
| Freepath™ Catheter Sheath Introducer System | 31 |
| Non-Vascular Guide Wires CE                 | 32 |
| Introducer Sheath Sets CE                   | 33 |
| Y Connector Sets CE                         | 35 |
| Balloon Inflation Devices CE                | 36 |
| Connecting Tubings CE                       | 37 |
| Introducer Needles CE                       | 38 |
| Manifolds CE                                | 39 |
| Radial Artery Tourniquets CE                | 40 |
| Dose-Control Syringes CE                    | 41 |
| Angiographic Syringe & Accessories CE       | 42 |



# Interventional Cardiovascular

POT™ PTCA NC Balloon Dilatation Catheter

Alveo™ HP CTO Balloon Dilatation Catheter

Wedge™ SC Scoring PTCA Balloon Dilatation Catheter

Wedge™ NC Scoring PTCA Balloon Dilatation Catheter

Artimes™ SC PTCA Balloon Dilatation Catheter

Apollo™ NC PTCA Balloon Dilatation Catheter



**POT™ PTCA<sup>NC</sup>**  
Balloon Dilatation Catheter

# POT™ PTCA NC Balloon Dilatation Catheter

A dedicated balloon for Proximal Optimization Technique in Bifurcation Stenting



CE  
2292

## FEATURES

- The extra short balloon shoulders reduce longitudinal balloon growth, minimizing the potential for vessel trauma outside the treatment area
- Ultra-low entry and crossing profile
- The Proximal segment of the stent can be evenly expanded to improve stent strut apposition
- Accurate Expansion for Post Dilatation Stenting
- Low compliance ensures controlled minimal growth up to RBP without any dog-bone effect

## Nominal Pressure (NP)

12 atm

## Rated Burst Pressure (RBP)

22 atm (φ2.25-4.0mm)  
20 atm (φ4.5-5.0mm)

## ORDERING INFORMATION

| Balloon Length | Balloon Diameter (mm) |          |          |          |          |          |          |          |          |          |
|----------------|-----------------------|----------|----------|----------|----------|----------|----------|----------|----------|----------|
|                | Ø 2.25                | Ø 2.5    | Ø 2.75   | Ø 3.0    | Ø 3.25   | Ø 3.5    | Ø 3.75   | Ø 4.0    | Ø 4.5    | Ø 5.0    |
| 6mm            | 833-2206              | 833-2506 | 833-2706 | 833-3006 | 833-3206 | 833-3506 | 833-3706 | 833-4006 | 833-4506 | 833-5006 |
| 8mm            | 833-2208              | 833-2508 | 833-2708 | 833-3008 | 833-3208 | 833-3508 | 833-3708 | 833-4008 | 833-4508 | 833-5008 |
| 10mm           | 833-2210              | 833-2510 | 833-2710 | 833-3010 | 833-3210 | 833-3510 | 833-3710 | 833-4010 | 833-4510 | 833-5010 |
| 12mm           | 833-2212              | 833-2512 | 833-2712 | 833-3012 | 833-3212 | 833-3512 | 833-3712 | 833-4012 | 833-4512 | 833-5012 |
| 15mm           | 833-2215              | 833-2515 | 833-2715 | 833-3015 | 833-3215 | 833-3515 | 833-3715 | 833-4015 | 833-4515 | 833-5015 |

# Alveo™ HP CTO Balloon Dilatation Catheter

Ø 0.75mm-World's Ultra-low Profile PCI Balloon Catheter  
Your first choice for CTOs and complex lesions



CE  
2292

## FEATURES

- Ø0.75mm balloon profile ideal for managing complex lesions and CTO
- High Pressure RBP 20 atm with robust balloon material
- Ultra-low Tip Entry Profile 0.0156" with leading laser processing technology

## Nominal Pressure (NP)

10 atm

## Rated Burst Pressure (RBP)

20 atm

## ORDERING INFORMATION

| Balloon Diameter | Balloon Length (mm) |          |          |          |          |          |          |          |
|------------------|---------------------|----------|----------|----------|----------|----------|----------|----------|
|                  | 5mm                 | 8mm      | 10mm     | 12mm     | 15mm     | 20mm     | 25mm     | 30mm     |
| Ø 0.75mm         | 813-0705            | 813-0708 | 813-0710 | 813-0712 | 813-0715 | 813-0720 | 813-0725 | 813-0730 |
| Ø 1.0mm          | 813-1005            | 813-1008 | 813-1010 | 813-1012 | 813-1015 | 813-1020 | 813-1025 | 813-1030 |
| Ø 1.25mm         | 813-1205            | 813-1208 | 813-1210 | 813-1212 | 813-1215 | 813-1220 | 813-1225 | 813-1230 |
| Ø 1.5mm          | 813-1505            | 813-1508 | 813-1510 | 813-1512 | 813-1515 | 813-1520 | 813-1525 | 813-1530 |
| Ø 1.75mm         | 813-1705            | 813-1708 | 813-1710 | 813-1712 | 813-1715 | 813-1720 | 813-1725 | 813-1730 |
| Ø 2.0mm          | 813-2005            | 813-2008 | 813-2010 | 813-2012 | 813-2015 | 813-2020 | 813-2025 | 813-2030 |

# Wedge™ SC

## Scoring PTCA Balloon Dilatation Catheter

World Smallest Scoring Balloon Available (φ1.5mm)  
Single Fixed Nitinol Scoring Wire



CE  
2797

### FEATURES

Wedge™ SC is ideal for the purpose of improving myocardial blood flow in the localized stenotic lesion of the coronary arteries

- Ideal for Small Vessel (SV)
- Specialty for Hard/Calcified CTO
- Suitable for Diffuse Lesion
- Maximally Eliminating Dissection

### Nominal Pressure (NP)

6 atm

### Rated Burst Pressure (RBP)

14 atm

### ORDERING INFORMATION

| Balloon Diameter | Balloon Length (mm) |          |          |          |          |          |          |          |
|------------------|---------------------|----------|----------|----------|----------|----------|----------|----------|
|                  | 5mm                 | 8mm      | 10mm     | 12mm     | 15mm     | 20mm     | 25mm     | 30mm     |
| 1.5mm            | 812-1505            | 812-1508 | 812-1510 | 812-1512 | 812-1515 | 812-1520 | 812-1525 | 812-1530 |
| 1.75mm           | 812-1705            | 812-1708 | 812-1710 | 812-1712 | 812-1715 | 812-1720 | 812-1725 | 812-1730 |
| 2mm              | 812-2005            | 812-2008 | 812-2010 | 812-2012 | 812-2015 | 812-2020 | 812-2025 | 812-2030 |
| 2.25mm           | 812-2205            | 812-2208 | 812-2210 | 812-2212 | 812-2215 | 812-2220 | 812-2225 | 812-2230 |
| 2.5mm            | 812-2505            | 812-2508 | 812-2510 | 812-2512 | 812-2515 | 812-2520 | 812-2525 | 812-2530 |
| 2.75mm           | 812-2705            | 812-2708 | 812-2710 | 812-2712 | 812-2715 | 812-2720 | 812-2725 | 812-2730 |
| 3.0mm            | 812-3005            | 812-3008 | 812-3010 | 812-3012 | 812-3015 | 812-3020 | 812-3025 | 812-3030 |
| 3.25mm           | 812-3205            | 812-3208 | 812-3210 | 812-3212 | 812-3215 | 812-3220 | 812-3225 | 812-3230 |
| 3.5mm            | 812-3505            | 812-3508 | 812-3510 | 812-3512 | 812-3515 | 812-3520 | 812-3525 | 812-3530 |
| 3.75mm           | 812-3705            | 812-3708 | 812-3710 | 812-3712 | 812-3715 | 812-3720 | 812-3725 | 812-3730 |
| 4.0mm            | 812-4005            | 812-4008 | 812-4010 | 812-4012 | 812-4015 | 812-4020 | 812-4025 | 812-4030 |

# Wedge™ NC

## Scoring PTCA Balloon Dilatation Catheter

Safe and controlled lesion preparation  
Ideal for In-Stent Restenosis



CE  
2292

### FEATURES

Wedge™ NC is designed to feel like a conventional balloon. With one fixed nitinol scoring wire on top of the balloon surface, it provides exact scoring and avoids twisted wires or interference with the stent

- Reduces "dog-boning" effect
- Minimizes "watermelon seeding"
- Creates a controlled dissection
- Optimal Lesion Preparation
- Suitable for Bifurcations and Calcified lesions

### Nominal Pressure (NP)

12 atm

### Rated Burst Pressure (RBP)

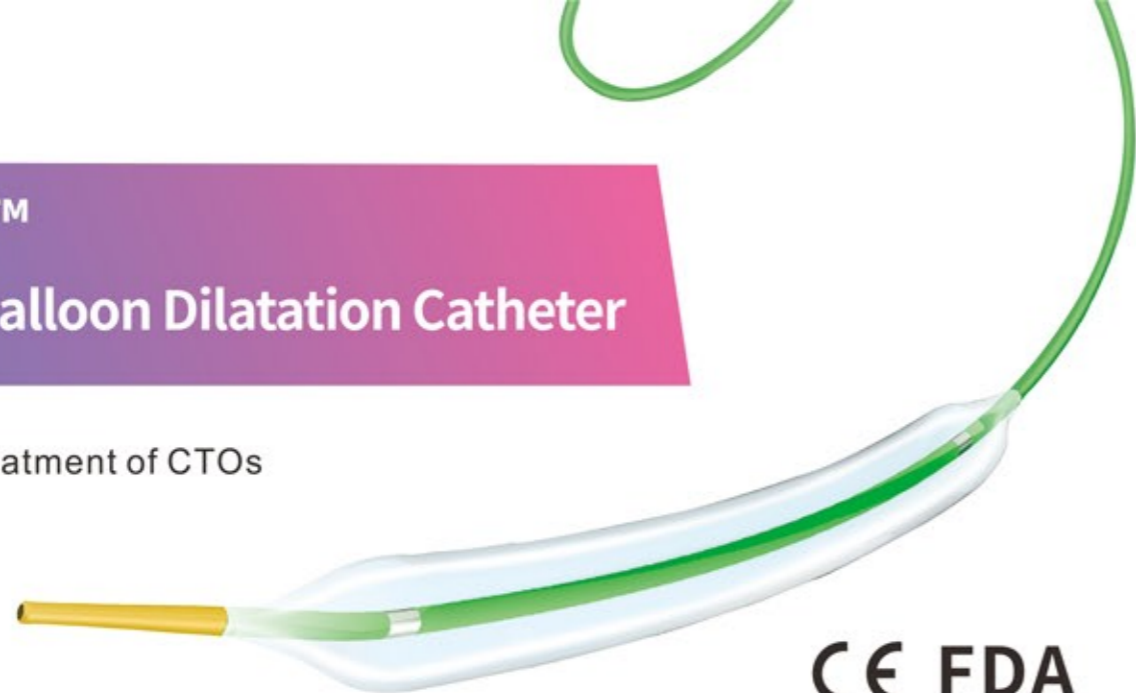
22 atm

### ORDERING INFORMATION

| Balloon Diameter | Balloon Length (mm) |          |          |          |          |          |          |          |          |          |
|------------------|---------------------|----------|----------|----------|----------|----------|----------|----------|----------|----------|
|                  | 6mm                 | 8mm      | 10mm     | 12mm     | 15mm     | 18mm     | 20mm     | 23mm     | 25mm     | 30mm     |
| 2.0mm            | 814-2006            | 814-2008 | 814-2010 | 814-2012 | 814-2015 | 814-2018 | 814-2020 | 814-2023 | 814-2025 | 814-2030 |
| 2.25mm           | 814-2206            | 814-2208 | 814-2210 | 814-2212 | 814-2215 | 814-2218 | 814-2220 | 814-2223 | 814-2225 | 814-2230 |
| 2.5mm            | 814-2506            | 814-2508 | 814-2510 | 814-2512 | 814-2515 | 814-2518 | 814-2520 | 814-2523 | 814-2525 | 814-2530 |
| 2.75mm           | 814-2706            | 814-2708 | 814-2710 | 814-2712 | 814-2715 | 814-2718 | 814-2720 | 814-2723 | 814-2725 | 814-2730 |
| 3.0mm            | 814-3006            | 814-3008 | 814-3010 | 814-3012 | 814-3015 | 814-3018 | 814-3020 | 814-3023 | 814-3025 | 814-3030 |
| 3.25mm           | 814-3206            | 814-3208 | 814-3210 | 814-3212 | 814-3215 | 814-3218 | 814-3220 | 814-3223 | 814-3225 | 814-3230 |
| 3.5mm            | 814-3506            | 814-3508 | 814-3510 | 814-3512 | 814-3515 | 814-3518 | 814-3520 | 814-3523 | 814-3525 | 814-3530 |
| 3.75mm           | 814-3706            | 814-3708 | 814-3710 | 814-3712 | 814-3715 | 814-3718 | 814-3720 | 814-3723 | 814-3725 | 814-3730 |
| 4.0mm            | 814-4006            | 814-4008 | 814-4010 | 814-4012 | 814-4015 | 814-4018 | 814-4020 | 814-4023 | 814-4025 | 814-4030 |

# Artimes™ SC PTCA Balloon Dilatation Catheter

Ideal for the Treatment of CTOs



CE FDA  
2797

## FEATURES

- Enhanced balloon Flexibility and Crossability
- Balanced, Ultra-low 0.016" Tip Profile
- 5F Compatible/ 6F Guide Kissing
- Low Crossing Profile for Easy Access
- Advanced Hydrophilic Coating
- Superior Fine Tuned Hypotube Design

## Nominal Pressure (NP)

6 atm

## Rated Burst Pressure (RBP)

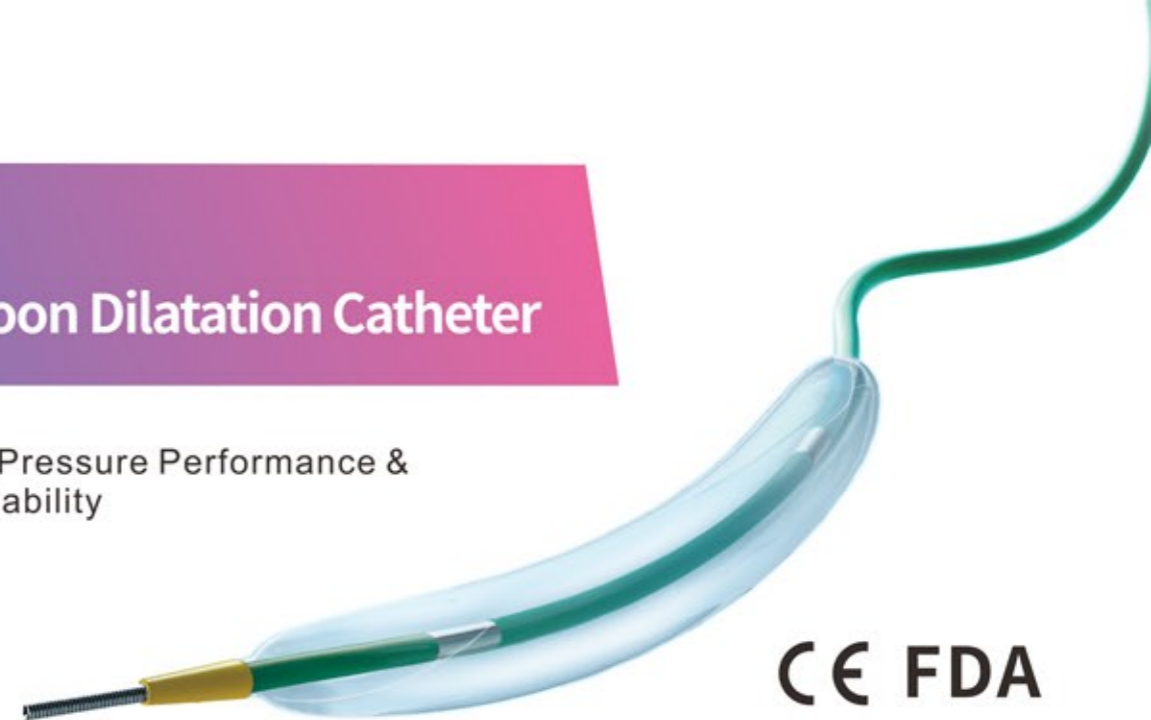
14 atm

## ORDERING INFORMATION

| Balloon Diameter | Balloon Length (mm) |          |          |          |          |          |          |          |
|------------------|---------------------|----------|----------|----------|----------|----------|----------|----------|
|                  | 5mm                 | 8mm      | 10mm     | 12mm     | 15mm     | 20mm     | 25mm     | 30mm     |
| 1.0mm            | 801-1005            | 801-1008 | 801-1010 | 801-1012 | 801-1015 | 801-1020 | 801-1025 | 801-1030 |
| 1.25mm           | 801-1205            | 801-1208 | 801-1210 | 801-1212 | 801-1215 | 801-1220 | 801-1225 | 801-1230 |
| 1.5mm            | 801-1505            | 801-1508 | 801-1510 | 801-1512 | 801-1515 | 801-1520 | 801-1525 | 801-1530 |
| 1.75mm           | 801-1705            | 801-1708 | 801-1710 | 801-1712 | 801-1715 | 801-1720 | 801-1725 | 801-1730 |
| 2.0mm            | 801-2005            | 801-2008 | 801-2010 | 801-2012 | 801-2015 | 801-2020 | 801-2025 | 801-2030 |
| 2.25mm           | 801-2205            | 801-2208 | 801-2210 | 801-2212 | 801-2215 | 801-2220 | 801-2225 | 801-2230 |
| 2.5mm            | 801-2505            | 801-2508 | 801-2510 | 801-2512 | 801-2515 | 801-2520 | 801-2525 | 801-2530 |
| 2.75mm           | 801-2705            | 801-2708 | 801-2710 | 801-2712 | 801-2715 | 801-2720 | 801-2725 | 801-2730 |
| 3.0mm            | 801-3005            | 801-3008 | 801-3010 | 801-3012 | 801-3015 | 801-3020 | 801-3025 | 801-3030 |
| 3.25mm           | 801-3205            | 801-3208 | 801-3210 | 801-3212 | 801-3215 | 801-3220 | 801-3225 | 801-3230 |
| 3.5mm            | 801-3505            | 801-3508 | 801-3510 | 801-3512 | 801-3515 | 801-3520 | 801-3525 | 801-3530 |
| 3.75mm           | 801-3705            | 801-3708 | 801-3710 | 801-3712 | 801-3715 | 801-3720 | 801-3725 | 801-3730 |
| 4.0mm            | 801-4005            | 801-4008 | 801-4010 | 801-4012 | 801-4015 | 801-4020 | 801-4025 | 801-4030 |

# Apollo™ NC PTCA Balloon Dilatation Catheter

Unmatched High Pressure Performance & Performance Reliability



CE FDA  
2797

## FEATURES

- Exceptionally minimal axial growth (3.0%) during inflation
- Average balloon burst pressure up to 30 atm
- Optimal balloon diameters and lengths to meet clinical demands
- 5F Guiding catheter compatible, 6F Guiding Kissing

## Nominal Pressure (NP)

12 atm

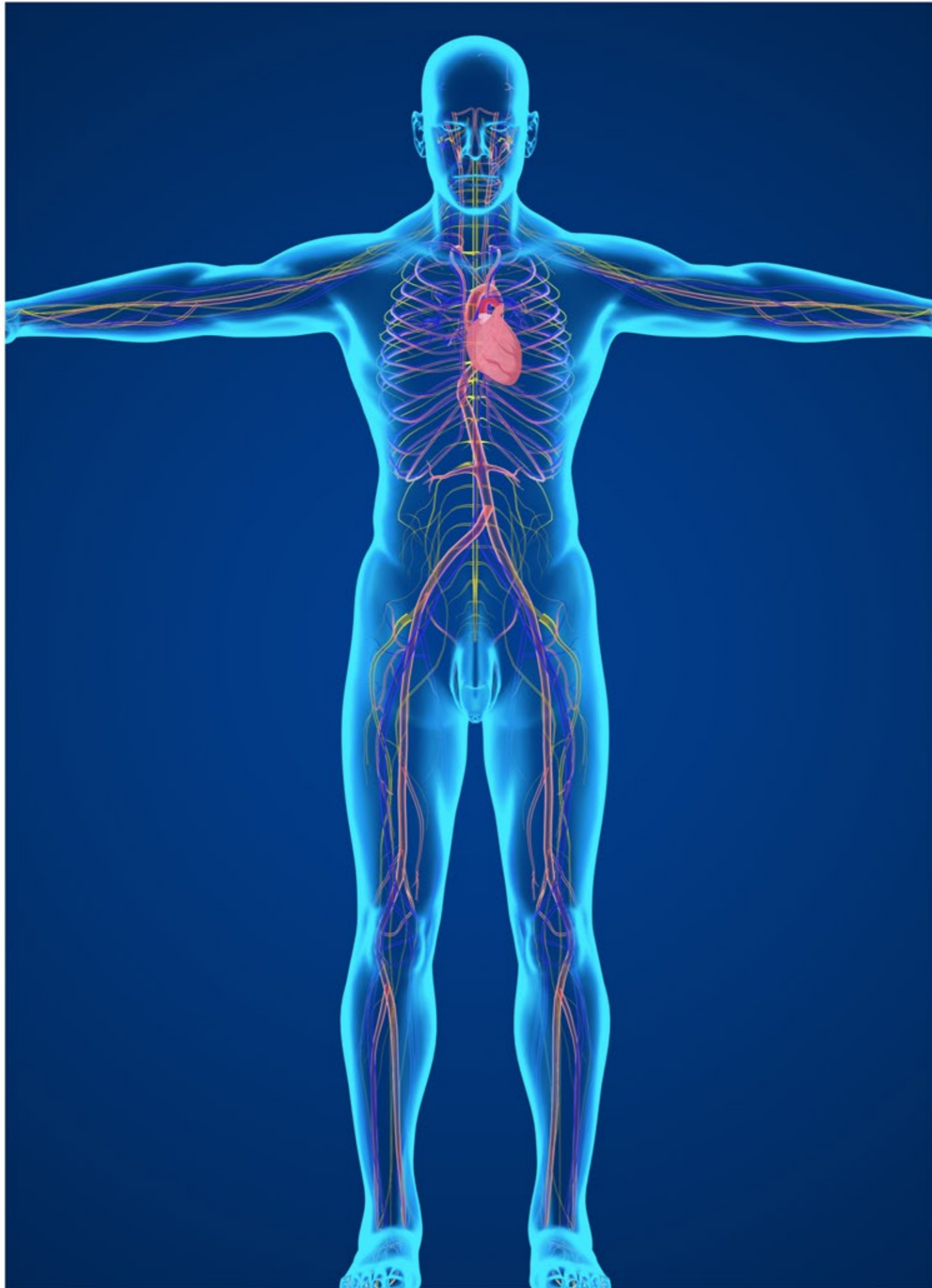
## Rated Burst Pressure (RBP)

22 atm (φ2.0-4.0mm)

20 atm (φ4.5-5.0mm)

## ORDERING INFORMATION

| Balloon Diameter | Balloon Length (mm) |          |          |          |          |          |          |          |          |          |
|------------------|---------------------|----------|----------|----------|----------|----------|----------|----------|----------|----------|
|                  | 6mm                 | 8mm      | 10mm     | 12mm     | 15mm     | 18mm     | 20mm     | 22mm     | 25mm     | 30mm     |
| φ2.0mm           | 802-2006            | 802-2008 | 802-2010 | 802-2012 | 802-2015 | 802-2018 | 802-2020 | 802-2022 | 802-2025 | 802-2030 |
| φ2.25mm          | 802-2206            | 802-2208 | 802-2210 | 802-2212 | 802-2215 | 802-2218 | 802-2220 | 802-2222 | 802-2225 | 802-2230 |
| φ2.5mm           | 802-2506            | 802-2508 | 802-2510 | 802-2512 | 802-2515 | 802-2518 | 802-2520 | 802-2522 | 802-2525 | 802-2530 |
| φ2.75mm          | 802-2706            | 802-2708 | 802-2710 | 802-2712 | 802-2715 | 802-2718 | 802-2720 | 802-2722 | 802-2725 | 802-2730 |
| φ3.0mm           | 802-3006            | 802-3008 | 802-3010 | 802-3012 | 802-3015 | 802-3018 | 802-3020 | 802-3022 | 802-3025 | 802-3030 |
| φ3.25mm          | 802-3206            | 802-3208 | 802-3210 | 802-3212 | 802-3215 | 802-3218 | 802-3220 | 802-3222 | 802-3225 | 802-3230 |
| φ3.5mm           | 802-3506            | 802-3508 | 802-3510 | 802-3512 | 802-3515 | 802-3518 | 802-3520 | 802-3522 | 802-3525 | 802-3530 |
| φ3.75mm          | 802-3706            | 802-3708 | 802-3710 | 802-3712 | 802-3715 | 802-3718 | 802-3720 | 802-3722 | 802-3725 | 802-3730 |
| φ4.0mm           | 802-4006            | 802-4008 | 802-4010 | 802-4012 | 802-4015 | 802-4018 | 802-4020 | 802-4022 | 802-4025 | 802-4030 |
| φ4.5mm           | 802-4506            | 802-4508 | 802-4510 | 802-4512 | 802-4515 | 802-4518 | 802-4520 | 802-4522 | 802-4525 | 802-4530 |
| φ5.0mm           | 802-5006            | 802-5008 | 802-5010 | 802-5012 | 802-5015 | 802-5018 | 802-5020 | 802-5022 | 802-5025 | 802-5030 |



# Peripheral Intervention

Tri-Wedge™ PTA Scoring Balloon Dilatation Catheter

Polux™ SC 0.014" OTW PTA Balloon Dilatation Catheter

Minerva™ SC 0.018" OTW PTA Balloon Dilatation Catheter

Atropos™ SC 0.035" OTW PTA Balloon Dilatation Catheter

Castor™ NC 0.014" OTW PTA Balloon Dilatation Catheter

Achilles™ NC 0.018" OTW PTA Balloon Dilatation Catheter

Hermes™ NC 0.035" OTW PTA Balloon Dilatation Catheter

Tiche™ NC 0.035" OTW PTA Balloon Dilatation Catheter

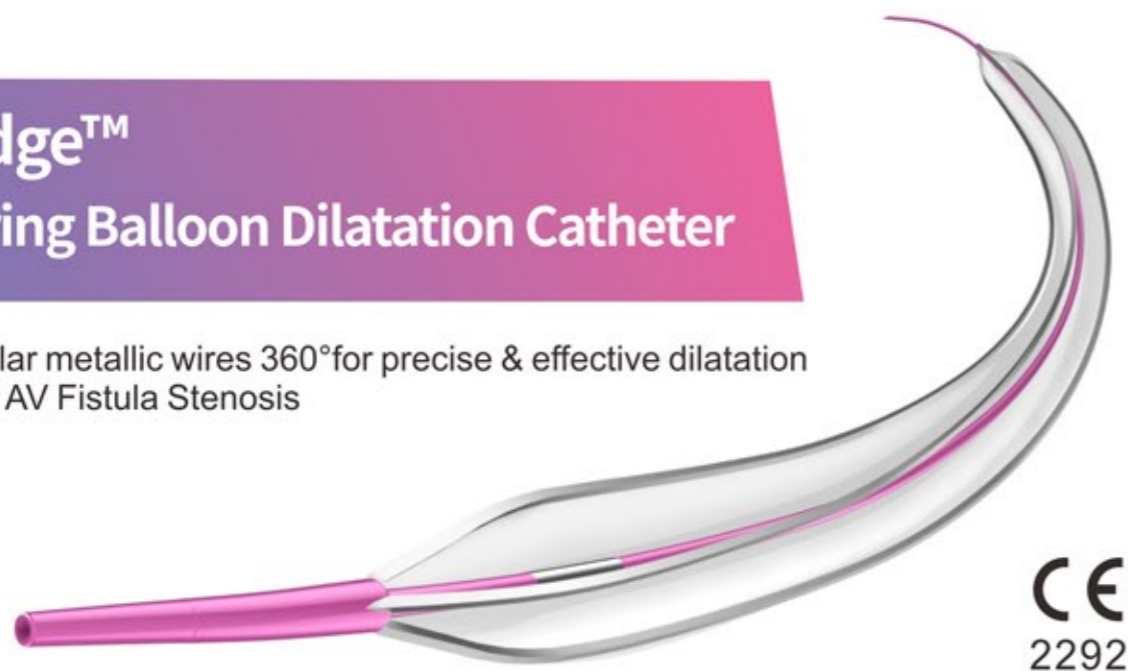


**Tri-Wedge**

PTA Scoring Balloon Dilatation Catheter

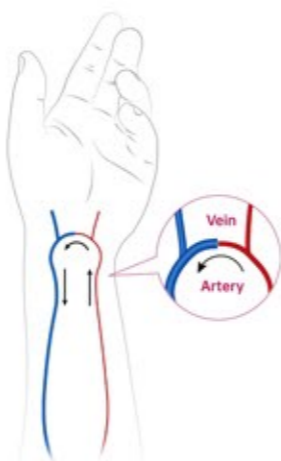
# Tri-Wedge™ PTA Scoring Balloon Dilatation Catheter

Three triangular metallic wires 360° for precise & effective dilatation  
Treatment for AV Fistula Stenosis



## FEATURES

Tri-Wedge PTA Scoring Balloon Dilatation Catheter is intended for stenotic lesions in the peripheral vasculature including the iliac, femoral, iliofemoral, popliteal and renal arteries. The unique triangular metallic scoring elements offer 360° of precise and effective dilatation. This creates a focal stress pattern to facilitate locked plaque modification under low dilatation pressures and it effectively reduces slippage during inflation



- 120° Scoring Elements: Three Triangular metallic wires 360° for precise dilatation
- Effective focused force dilatation at low pressures to reduce patient's pain
- Easy navigation in tortuous vasculature
- Reducing vessel wall injury and dissection improving the prognosis

### Nominal Pressure (NP)

12 atm

### Rated Burst Pressure (RBP)

20 atm (φ3.0-6.0mm)  
16 atm (φ7.0-8.0mm)

## ORDERING INFORMATION

| 0.018"   | 50cm (Working Length) |          |          |          | 90cm (Working Length) |          |          |          |
|----------|-----------------------|----------|----------|----------|-----------------------|----------|----------|----------|
| Diameter | 20mm                  | 30mm     | 40mm     | 60mm     | 20mm                  | 30mm     | 40mm     | 60mm     |
| 3.0mm    | 21-18S32              | 21-18S33 | 21-18S34 | 21-18S36 | 21-18L32              | 21-18L33 | 21-18L34 | 21-18L36 |
| 4.0mm    | 21-18S42              | 21-18S43 | 21-18S44 | 21-18S46 | 21-18L42              | 21-18L43 | 21-18L44 | 21-18L46 |
| 5.0mm    | 21-18S52              | 21-18S53 | 21-18S54 | 21-18S56 | 21-18L52              | 21-18L53 | 21-18L54 | 21-18L56 |
| 6.0mm    | 21-18S62              | 21-18S63 | 21-18S64 | 21-18S66 | 21-18L62              | 21-18L63 | 21-18L64 | 21-18L66 |
| 7.0mm    | 21-18S72              | 21-18S73 | 21-18S74 | 21-18S76 | 21-18L72              | 21-18L73 | 21-18L74 | 21-18L76 |
| 8.0mm    | 21-18S82              | 21-18S83 | 21-18S84 | 21-18S86 | 21-18L82              | 21-18L83 | 21-18L84 | 21-18L86 |

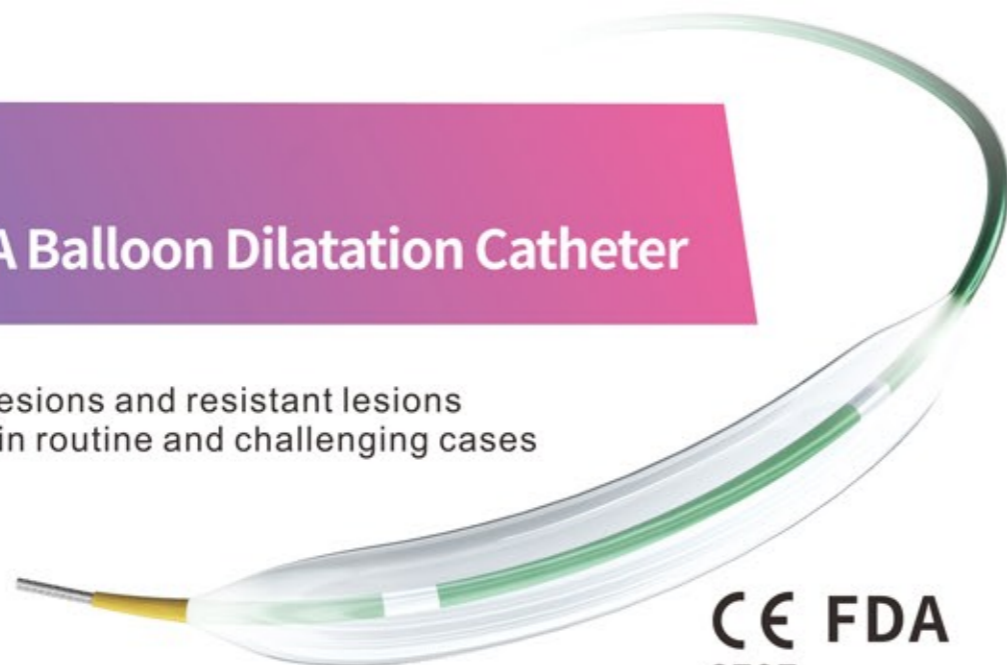
| 0.035"   | 50cm (Working Length) |          |          |          | 75cm (Working Length) |          |          |          |
|----------|-----------------------|----------|----------|----------|-----------------------|----------|----------|----------|
| Diameter | 20mm                  | 30mm     | 40mm     | 60mm     | 20mm                  | 30mm     | 40mm     | 60mm     |
| 3.0mm    | 21-35S32              | 21-35S33 | 21-35S34 | 21-35S36 | 21-35L32              | 21-35L33 | 21-35L34 | 21-35L36 |
| 4.0mm    | 21-35S42              | 21-35S43 | 21-35S44 | 21-35S46 | 21-35L42              | 21-35L43 | 21-35L44 | 21-35L46 |
| 5.0mm    | 21-35S52              | 21-35S53 | 21-35S54 | 21-35S56 | 21-35L52              | 21-35L53 | 21-35L54 | 21-35L56 |
| 6.0mm    | 21-35S62              | 21-35S63 | 21-35S64 | 21-35S66 | 21-35L62              | 21-35L63 | 21-35L64 | 21-35L66 |
| 7.0mm    | 21-35S72              | 21-35S73 | 21-35S74 | 21-35S76 | 21-35L72              | 21-35L73 | 21-35L74 | 21-35L76 |
| 8.0mm    | 21-35S82              | 21-35S83 | 21-35S84 | 21-35S86 | 21-35L82              | 21-35L83 | 21-35L84 | 21-35L86 |

Sheath Compatibility **5F** **6F** **7F**

# Polux™ SC

## 0.014" OTW PTA Balloon Dilatation Catheter

Designed to treat BTK lesions and resistant lesions  
Excellent performance in routine and challenging cases



CE FDA  
2797

### FEATURES

- Optimized Crossing Profile: Best in class crossing capability for diffused and challenging lesions
- Hydrophilic Coating: Ensures smooth entry to tight lesions
- Low entry profile 0.017": For reaching distal vasculature
- Kink resistant shaft: Smooth transmission through tortuous vasculature

### Nominal Pressure (NP)

6 atm

### Rated Burst Pressure (RBP)

14 atm

### Sheath Compatibility

4F (φ1.5-4.0mm)

5F (φ4.5-6.0mm)

### ORDERING INFORMATION

| Balloon OD | Balloon Length | Catheter Length |                |                |
|------------|----------------|-----------------|----------------|----------------|
|            |                | 70cm            | 90cm           | 150cm          |
| 1.5mm      | 5mm            | 818-015005-070  | 818-015005-090 | 818-015005-150 |
|            | 10mm           | 818-015010-070  | 818-015010-090 | 818-015010-150 |
|            | 15mm           | 818-015015-070  | 818-015015-090 | 818-015015-150 |
|            | 20mm           | 818-015020-070  | 818-015020-090 | 818-015020-150 |
|            | 30mm           | 818-015030-070  | 818-015030-090 | 818-015030-150 |
|            | 40mm           | 818-015040-070  | 818-015040-090 | 818-015040-150 |
|            | 60mm           | 818-015060-070  | 818-015060-090 | 818-015060-150 |
|            | 80mm           | 818-015080-070  | 818-015080-090 | 818-015080-150 |
|            | 100mm          | 818-015100-070  | 818-015100-090 | 818-015100-150 |
|            | 120mm          | 818-015120-070  | 818-015120-090 | 818-015120-150 |
|            | 150mm          | 818-015150-070  | 818-015150-090 | 818-015150-150 |
| 200mm      | 818-015200-070 | 818-015200-090  | 818-015200-150 |                |

### ORDERING INFORMATION

| Balloon OD | Balloon Length | Catheter Length |                |                |
|------------|----------------|-----------------|----------------|----------------|
|            |                | 70cm            | 90cm           | 150cm          |
| 2.0mm      | 5mm            | 818-020005-070  | 818-020005-090 | 818-020005-150 |
|            | 10mm           | 818-020010-070  | 818-020010-090 | 818-020010-150 |
|            | 15mm           | 818-020015-070  | 818-020015-090 | 818-020015-150 |
|            | 20mm           | 818-020020-070  | 818-020020-090 | 818-020020-150 |
|            | 30mm           | 818-020030-070  | 818-020030-090 | 818-020030-150 |
|            | 40mm           | 818-020040-070  | 818-020040-090 | 818-020040-150 |
|            | 60mm           | 818-020060-070  | 818-020060-090 | 818-020060-150 |
|            | 80mm           | 818-020080-070  | 818-020080-090 | 818-020080-150 |
|            | 100mm          | 818-020100-070  | 818-020100-090 | 818-020100-150 |
|            | 120mm          | 818-020120-070  | 818-020120-090 | 818-020120-150 |
|            | 150mm          | 818-020150-070  | 818-020150-090 | 818-020150-150 |
| 2.5mm      | 5mm            | 818-025005-070  | 818-025005-090 | 818-025005-150 |
|            | 10mm           | 818-025010-070  | 818-025010-090 | 818-025010-150 |
|            | 15mm           | 818-025015-070  | 818-025015-090 | 818-025015-150 |
|            | 20mm           | 818-025020-070  | 818-025020-090 | 818-025020-150 |
|            | 30mm           | 818-025030-070  | 818-025030-090 | 818-025030-150 |
|            | 40mm           | 818-025040-070  | 818-025040-090 | 818-025040-150 |
|            | 60mm           | 818-025060-070  | 818-025060-090 | 818-025060-150 |
|            | 80mm           | 818-025080-070  | 818-025080-090 | 818-025080-150 |
|            | 100mm          | 818-025100-070  | 818-025100-090 | 818-025100-150 |
|            | 120mm          | 818-025120-070  | 818-025120-090 | 818-025120-150 |
|            | 150mm          | 818-025150-070  | 818-025150-090 | 818-025150-150 |
| 3.0mm      | 5mm            | 818-030005-070  | 818-030005-090 | 818-030005-150 |
|            | 10mm           | 818-030010-070  | 818-030010-090 | 818-030010-150 |
|            | 15mm           | 818-030015-070  | 818-030015-090 | 818-030015-150 |
|            | 20mm           | 818-030020-070  | 818-030020-090 | 818-030020-150 |
|            | 30mm           | 818-030030-070  | 818-030030-090 | 818-030030-150 |
|            | 40mm           | 818-030040-070  | 818-030040-090 | 818-030040-150 |
|            | 60mm           | 818-030060-070  | 818-030060-090 | 818-030060-150 |
|            | 80mm           | 818-030080-070  | 818-030080-090 | 818-030080-150 |
|            | 100mm          | 818-030100-070  | 818-030100-090 | 818-030100-150 |
|            | 120mm          | 818-030120-070  | 818-030120-090 | 818-030120-150 |
|            | 150mm          | 818-030150-070  | 818-030150-090 | 818-030150-150 |
| 3.5mm      | 5mm            | 818-035005-070  | 818-035005-090 | 818-035005-150 |
|            | 10mm           | 818-035010-070  | 818-035010-090 | 818-035010-150 |
|            | 15mm           | 818-035015-070  | 818-035015-090 | 818-035015-150 |
|            | 20mm           | 818-035020-070  | 818-035020-090 | 818-035020-150 |
|            | 30mm           | 818-035030-070  | 818-035030-090 | 818-035030-150 |
|            | 40mm           | 818-035040-070  | 818-035040-090 | 818-035040-150 |
|            | 60mm           | 818-035060-070  | 818-035060-090 | 818-035060-150 |
|            | 80mm           | 818-035080-070  | 818-035080-090 | 818-035080-150 |
|            | 100mm          | 818-035100-070  | 818-035100-090 | 818-035100-150 |
|            | 120mm          | 818-035120-070  | 818-035120-090 | 818-035120-150 |
|            | 150mm          | 818-035150-070  | 818-035150-090 | 818-035150-150 |
| 4.0mm      | 5mm            | 818-040005-070  | 818-040005-090 | 818-040005-150 |
|            | 10mm           | 818-040010-070  | 818-040010-090 | 818-040010-150 |
|            | 15mm           | 818-040015-070  | 818-040015-090 | 818-040015-150 |
|            | 20mm           | 818-040020-070  | 818-040020-090 | 818-040020-150 |
|            | 30mm           | 818-040030-070  | 818-040030-090 | 818-040030-150 |
|            | 40mm           | 818-040040-070  | 818-040040-090 | 818-040040-150 |
|            | 60mm           | 818-040060-070  | 818-040060-090 | 818-040060-150 |
|            | 80mm           | 818-040080-070  | 818-040080-090 | 818-040080-150 |
|            | 100mm          | 818-040100-070  | 818-040100-090 | 818-040100-150 |
|            | 120mm          | 818-040120-070  | 818-040120-090 | 818-040120-150 |
|            | 150mm          | 818-040150-070  | 818-040150-090 | 818-040150-150 |

# Minerva™ SC

## 0.018" OTW PTA Balloon Dilatation Catheter

Excellent for dilatation and lesion preparation  
Broad size range for clinic application



**CE FDA**  
2797

### FEATURES

- Low tip profile 0.020": Facilitates lesion entry
- Latest hydrophilic coating technology to facility easy maneuvering through complex anatomy and lesions
- Consistent Rated Burst Pressure for all sizes
- To treat a wide range of indications

### Nominal Pressure (NP)

6 atm

### Rated Burst Pressure (RBP)

14 atm

### Sheath Compatibility

6F (Ø1.6-1.8mm)

3F (Ø1.05-1.0mm)

### ORDERING INFORMATION

| Balloon OD | Balloon Length | Catheter Length |                |                |                |
|------------|----------------|-----------------|----------------|----------------|----------------|
|            |                | 40cm            | 70cm           | 90cm           | 150cm          |
| 1.5mm      | 5mm            |                 | 803-015005-070 | 803-015005-090 | 803-015005-150 |
|            | 10mm           |                 | 803-015010-070 | 803-015010-090 | 803-015010-150 |
|            | 15mm           |                 | 803-015015-070 | 803-015015-090 | 803-015015-150 |
|            | 20mm           |                 | 803-015020-070 | 803-015020-090 | 803-015020-150 |
|            | 30mm           |                 | 803-015030-070 | 803-015030-090 | 803-015030-150 |
|            | 40mm           |                 | 803-015040-070 | 803-015040-090 | 803-015040-150 |
|            | 60mm           |                 | 803-015060-070 | 803-015060-090 | 803-015060-150 |
|            | 80mm           |                 | 803-015080-070 | 803-015080-090 | 803-015080-150 |
|            | 100mm          |                 | 803-015100-070 | 803-015100-090 | 803-015100-150 |
|            | 120mm          |                 | 803-015120-070 | 803-015120-090 | 803-015120-150 |
| 2.0mm      | 5mm            |                 | 803-020005-070 | 803-020005-090 | 803-020005-150 |
|            | 10mm           |                 | 803-020010-070 | 803-020010-090 | 803-020010-150 |
|            | 15mm           |                 | 803-020015-070 | 803-020015-090 | 803-020015-150 |
|            | 20mm           |                 | 803-020020-070 | 803-020020-090 | 803-020020-150 |
|            | 30mm           |                 | 803-020030-070 | 803-020030-090 | 803-020030-150 |
|            | 40mm           |                 | 803-020040-070 | 803-020040-090 | 803-020040-150 |
|            | 60mm           |                 | 803-020060-070 | 803-020060-090 | 803-020060-150 |
|            | 80mm           |                 | 803-020080-070 | 803-020080-090 | 803-020080-150 |
|            | 100mm          |                 | 803-020100-070 | 803-020100-090 | 803-020100-150 |
|            | 120mm          |                 | 803-020120-070 | 803-020120-090 | 803-020120-150 |
| 2.5mm      | 5mm            |                 | 803-025005-070 | 803-025005-090 | 803-025005-150 |
|            | 10mm           |                 | 803-025010-070 | 803-025010-090 | 803-025010-150 |
|            | 15mm           |                 | 803-025015-070 | 803-025015-090 | 803-025015-150 |
|            | 20mm           |                 | 803-025020-070 | 803-025020-090 | 803-025020-150 |
|            | 30mm           |                 | 803-025030-070 | 803-025030-090 | 803-025030-150 |
|            | 40mm           |                 | 803-025040-070 | 803-025040-090 | 803-025040-150 |
|            | 60mm           |                 | 803-025060-070 | 803-025060-090 | 803-025060-150 |
|            | 80mm           |                 | 803-025080-070 | 803-025080-090 | 803-025080-150 |
|            | 100mm          |                 | 803-025100-070 | 803-025100-090 | 803-025100-150 |
|            | 120mm          |                 | 803-025120-070 | 803-025120-090 | 803-025120-150 |
| 3.0mm      | 5mm            |                 | 803-030005-070 | 803-030005-090 | 803-030005-150 |
|            | 10mm           |                 | 803-030010-070 | 803-030010-090 | 803-030010-150 |
|            | 15mm           |                 | 803-030015-070 | 803-030015-090 | 803-030015-150 |
|            | 20mm           |                 | 803-030020-070 | 803-030020-090 | 803-030020-150 |
|            | 30mm           |                 | 803-030030-070 | 803-030030-090 | 803-030030-150 |
|            | 40mm           |                 | 803-030040-070 | 803-030040-090 | 803-030040-150 |
|            | 60mm           |                 | 803-030060-070 | 803-030060-090 | 803-030060-150 |
|            | 80mm           |                 | 803-030080-070 | 803-030080-090 | 803-030080-150 |
|            | 100mm          |                 | 803-030100-070 | 803-030100-090 | 803-030100-150 |
|            | 120mm          |                 | 803-030120-070 | 803-030120-090 | 803-030120-150 |
| 3.5mm      | 5mm            |                 | 803-035005-070 | 803-035005-090 | 803-035005-150 |
|            | 10mm           |                 | 803-035010-070 | 803-035010-090 | 803-035010-150 |
|            | 15mm           |                 | 803-035015-070 | 803-035015-090 | 803-035015-150 |
|            | 20mm           |                 | 803-035020-070 | 803-035020-090 | 803-035020-150 |
|            | 30mm           |                 | 803-035030-070 | 803-035030-090 | 803-035030-150 |
|            | 40mm           |                 | 803-035040-070 | 803-035040-090 | 803-035040-150 |
|            | 60mm           |                 | 803-035060-070 | 803-035060-090 | 803-035060-150 |
|            | 80mm           |                 | 803-035080-070 | 803-035080-090 | 803-035080-150 |
|            | 100mm          |                 | 803-035100-070 | 803-035100-090 | 803-035100-150 |
|            | 120mm          |                 | 803-035120-070 | 803-035120-090 | 803-035120-150 |
| 4.0mm      | 5mm            |                 | 803-040005-070 | 803-040005-090 | 803-040005-150 |
|            | 10mm           |                 | 803-040010-070 | 803-040010-090 | 803-040010-150 |
|            | 15mm           |                 | 803-040015-070 | 803-040015-090 | 803-040015-150 |
|            | 20mm           |                 | 803-040020-070 | 803-040020-090 | 803-040020-150 |
|            | 30mm           |                 | 803-040030-070 | 803-040030-090 | 803-040030-150 |
|            | 40mm           |                 | 803-040040-070 | 803-040040-090 | 803-040040-150 |
|            | 60mm           |                 | 803-040060-070 | 803-040060-090 | 803-040060-150 |
|            | 80mm           |                 | 803-040080-070 | 803-040080-090 | 803-040080-150 |
|            | 100mm          |                 | 803-040100-070 | 803-040100-090 | 803-040100-150 |
|            | 120mm          |                 | 803-040120-070 | 803-040120-090 | 803-040120-150 |
| 4.5mm      | 5mm            |                 | 803-045005-070 | 803-045005-090 | 803-045005-150 |
|            | 10mm           |                 | 803-045010-070 | 803-045010-090 | 803-045010-150 |
|            | 15mm           |                 | 803-045015-070 | 803-045015-090 | 803-045015-150 |
|            | 20mm           |                 | 803-045020-070 | 803-045020-090 | 803-045020-150 |
|            | 30mm           |                 | 803-045030-070 | 803-045030-090 | 803-045030-150 |
|            | 40mm           |                 | 803-045040-070 | 803-045040-090 | 803-045040-150 |
|            | 60mm           |                 | 803-045060-070 | 803-045060-090 | 803-045060-150 |
|            | 80mm           |                 | 803-045080-070 | 803-045080-090 | 803-045080-150 |
|            | 100mm          |                 | 803-045100-070 | 803-045100-090 | 803-045100-150 |
|            | 120mm          |                 | 803-045120-070 | 803-045120-090 | 803-045120-150 |
| 5.0mm      | 5mm            |                 | 803-050005-070 | 803-050005-090 | 803-050005-150 |
|            | 10mm           |                 | 803-050010-070 | 803-050010-090 | 803-050010-150 |
|            | 15mm           |                 | 803-050015-070 | 803-050015-090 | 803-050015-150 |
|            | 20mm           |                 | 803-050020-070 | 803-050020-090 | 803-050020-150 |
|            | 30mm           |                 | 803-050030-070 | 803-050030-090 | 803-050030-150 |
|            | 40mm           |                 | 803-050040-070 | 803-050040-090 | 803-050040-150 |
|            | 60mm           |                 | 803-050060-070 | 803-050060-090 | 803-050060-150 |
|            | 80mm           |                 | 803-050080-070 | 803-050080-090 | 803-050080-150 |
|            | 100mm          |                 | 803-050100-070 | 803-050100-090 | 803-050100-150 |
|            | 120mm          |                 | 803-050120-070 | 803-050120-090 | 803-050120-150 |
| 5.5mm      | 5mm            |                 | 803-055005-070 | 803-055005-090 | 803-055005-150 |
|            | 10mm           |                 | 803-055010-070 | 803-055010-090 | 803-055010-150 |
|            | 15mm           |                 | 803-055015-070 | 803-055015-090 | 803-055015-150 |
|            | 20mm           |                 | 803-055020-070 | 803-055020-090 | 803-055020-150 |
|            | 30mm           |                 | 803-055030-070 | 803-055030-090 | 803-055030-150 |
|            | 40mm           |                 | 803-055040-070 | 803-055040-090 | 803-055040-150 |
|            | 60mm           |                 | 803-055060-070 | 803-055060-090 | 803-055060-150 |
|            | 80mm           |                 | 803-055080-070 | 803-055080-090 | 803-055080-150 |
|            | 100mm          |                 | 803-055100-070 | 803-055100-090 | 803-055100-150 |
|            | 120mm          |                 | 803-055120-070 | 803-055120-090 | 803-055120-150 |
| 6.0mm      | 5mm            |                 | 803-060005-070 | 803-060005-090 | 803-060005-150 |
|            | 10mm           |                 | 803-060010-070 | 803-060010-090 | 803-060010-150 |
|            | 15mm           |                 | 803-060015-070 | 803-060015-090 | 803-060015-150 |
|            | 20mm           |                 | 803-060020-070 | 803-060020-090 | 803-060020-150 |
|            | 30mm           |                 | 803-060030-070 | 803-060030-090 | 803-060030-150 |
|            | 40mm           |                 | 803-060040-070 | 803-060040-090 | 803-060040-150 |
|            | 60mm           |                 | 803-060060-070 | 803-060060-090 | 803-060060-150 |
|            | 80mm           |                 | 803-060080-070 | 803-060080-090 | 803-060080-150 |
|            | 100mm          |                 | 803-060100-070 | 803-060100-090 | 803-060100-150 |
|            | 120mm          |                 | 803-060120-070 | 803-060120-090 | 803-060120-150 |
| 7.0mm      | 5mm            |                 | 803-070005-070 | 803-070005-090 | 803-070005-150 |
|            | 10mm           |                 | 803-070010-070 | 803-070010-090 | 803-070010-150 |
|            | 15mm           |                 | 803-070015-070 | 803-070015-090 | 803-070015-150 |
|            | 20mm           |                 | 803-070020-070 | 803-070020-090 | 803-070020-150 |
|            | 30mm           |                 | 803-070030-070 | 803-070030-090 | 803-070030-150 |
|            | 40mm           |                 | 803-070040-070 | 803-070040-090 | 803-070040-150 |
|            | 60mm           |                 | 803-070060-070 | 803-070060-090 | 803-070060-150 |
|            | 80mm           |                 | 803-070080-070 | 803-070080-090 | 803-070080-150 |
|            | 100mm          |                 | 803-070100-070 | 803-070100-090 | 803-070100-150 |
|            | 120mm          |                 | 803-070120-070 | 803-070120-090 | 803-070120-150 |
| 8.0mm      | 5mm            |                 | 803-080005-070 | 803-080005-090 | 803-080005-150 |
|            | 10mm           |                 | 803-080010-070 | 803-080010-090 | 803-080010-150 |
|            | 15mm           |                 | 803-080015-070 | 803-080015-090 | 803-080015-150 |
|            | 20mm           |                 | 803-080020-070 | 803-080020-090 | 803-080020-150 |
|            | 30mm           |                 | 803-080030-070 | 803-080030-090 | 803-080030-150 |
|            | 40mm           |                 | 803-080040-070 | 803-080040-090 | 803-080040-150 |
|            | 60mm           |                 | 803-080060-070 | 803-080060-090 | 803-080060-150 |
|            | 80mm           |                 | 803-080080-070 | 803-080080-090 | 803-080080-150 |
|            | 100mm          |                 | 803-080100-070 | 803-080100-090 | 803-080100-150 |
|            | 120mm          |                 | 803-080120-070 | 803-080120-090 | 803-080120-150 |
| 9.0mm      | 5mm            |                 | 803-090005-070 | 803-090005-090 | 803-090005-150 |
|            | 10mm           |                 | 803-090010-070 | 803-090010-090 | 803-090010-150 |
|            | 15mm           |                 | 803-090015-070 | 803-090015-090 | 803-090015-150 |
|            | 20mm           |                 | 803-090020-070 | 803-090020-090 | 803-090020-150 |
|            | 30mm           |                 | 803-090030-070 | 803-090030-090 | 803-090030-150 |
|            | 40mm           |                 | 803-090040-070 | 803-090040-090 | 803-090040-150 |
|            | 60mm           |                 | 803-090060-070 | 803-090060-090 | 803-090060-150 |
|            | 80mm           |                 | 803-090080-070 | 803-090080-090 | 803-090080-150 |
|            | 100mm          |                 | 803-090100-070 | 803-090100-090 | 803-090100-150 |
|            | 120mm          |                 | 803-090120-070 | 803-090120-090 | 803-090120-150 |
| 10.0mm     | 5mm            |                 | 803-100005-070 | 803-100005-090 | 803-100005-150 |
|            | 10mm           |                 | 803-100010-070 | 803-100010-090 | 803-100010-150 |
|            | 15mm           |                 | 803-100015-070 | 803-100015-090 | 803-100015-150 |
|            | 20mm           |                 | 803-100020-070 | 803-100020-090 | 803-100020-150 |
|            | 30mm           |                 | 803-100030-070 | 803-100030-090 | 803-100030-150 |
|            | 40mm           |                 | 803-100040-070 | 803-100040-090 | 803-100040-150 |
|            | 60mm           |                 | 803-100060-070 | 803-100060-090 | 803-100060-150 |
|            | 80mm           |                 | 803-100080-070 | 803-100080-090 | 803-100080-150 |
|            | 100mm          |                 | 803-100100-070 | 803-100100-090 | 803-100100-150 |

# Atropos™ SC

## 0.035" OTW PTA Balloon Dilatation Catheter

Engineered for AV access  
Designed to treat fibrotic and calcified lesions



CE FDA  
2797

### FEATURES

- Seamless tip-to-shaft design for smooth push force transmission and excellent pushability
- Combines strength and optimal control in routine and challenging cases
- Lowest tip profile 0.038": facilitates lesion crossing with ease
- Broad size range: Diameter: 3.0-10.0mm, Length: 20-200mm

### Nominal Pressure (NP)

6 atm

### Rated Burst Pressure (RBP)

14 atm

### Sheath Compatibility

- 5F (Ø3.0-5.0mm)
- 6F (Ø6.0-8.0mm)
- 7F (Ø9.0-10.0mm)

### ORDERING INFORMATION

| Balloon OD | Balloon Length | Catheter Length |                |                |                |
|------------|----------------|-----------------|----------------|----------------|----------------|
|            |                | 40cm            | 70cm           | 90cm           | 150cm          |
| 3.0mm      | 20mm           | 819-030020-040  | 819-030020-070 | 819-030020-090 | 819-030020-150 |
|            | 30mm           | 819-030030-040  | 819-030030-070 | 819-030030-090 | 819-030030-150 |
|            | 40mm           | 819-030040-040  | 819-030040-070 | 819-030040-090 | 819-030040-150 |
|            | 60mm           | 819-030060-040  | 819-030060-070 | 819-030060-090 | 819-030060-150 |
|            | 80mm           | /               | 819-030080-070 | 819-030080-090 | 819-030080-150 |
|            | 100mm          | /               | 819-030100-070 | 819-030100-090 | 819-030100-150 |
|            | 120mm          | /               | 819-030120-070 | 819-030120-090 | 819-030120-150 |
|            | 150mm          | /               | 819-030150-070 | 819-030150-090 | 819-030150-150 |
|            | 200mm          | /               | 819-030200-070 | 819-030200-090 | 819-030200-150 |
| 4.0mm      | 20mm           | 819-040020-040  | 819-040020-070 | 819-040020-090 | 819-040020-150 |
|            | 30mm           | 819-040030-040  | 819-040030-070 | 819-040030-090 | 819-040030-150 |
|            | 40mm           | 819-040040-040  | 819-040040-070 | 819-040040-090 | 819-040040-150 |
|            | 60mm           | 819-040060-040  | 819-040060-070 | 819-040060-090 | 819-040060-150 |
|            | 80mm           | /               | 819-040080-070 | 819-040080-090 | 819-040080-150 |
|            | 100mm          | /               | 819-040100-070 | 819-040100-090 | 819-040100-150 |
|            | 120mm          | /               | 819-040120-070 | 819-040120-090 | 819-040120-150 |
|            | 150mm          | /               | 819-040150-070 | 819-040150-090 | 819-040150-150 |
|            | 200mm          | /               | 819-040200-070 | 819-040200-090 | 819-040200-150 |

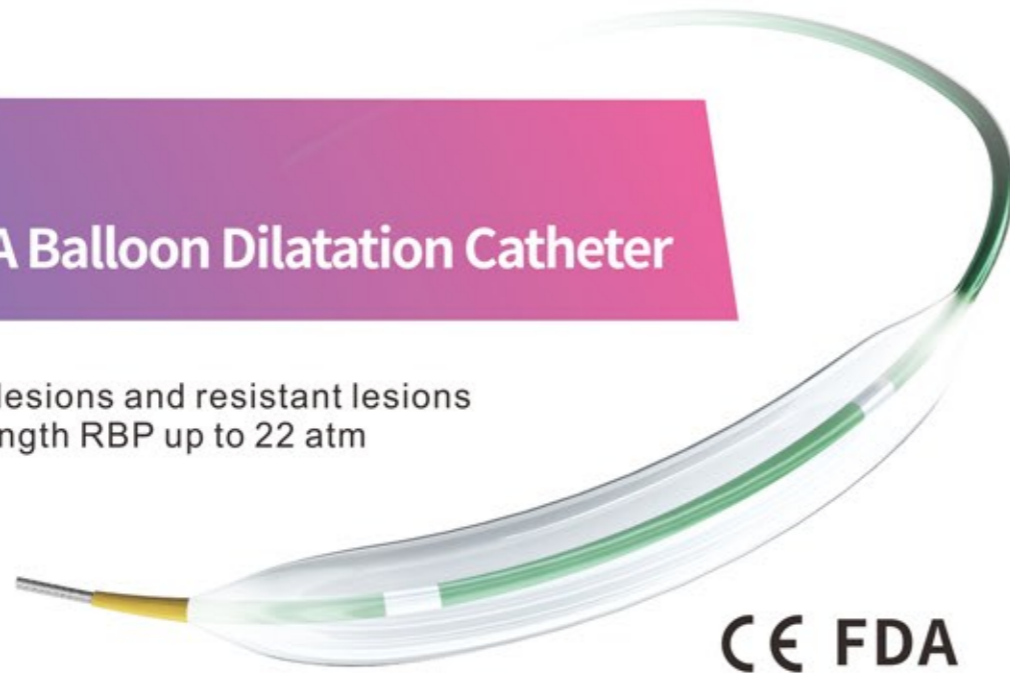
### ORDERING INFORMATION

| Balloon OD | Balloon Length | Catheter Length |                |                |                |
|------------|----------------|-----------------|----------------|----------------|----------------|
|            |                | 40cm            | 70cm           | 90cm           | 150cm          |
| 5.0mm      | 20mm           | 819-050020-040  | 819-050020-070 | 819-050020-090 | 819-050020-150 |
|            | 30mm           | 819-050030-040  | 819-050030-070 | 819-050030-090 | 819-050030-150 |
|            | 40mm           | 819-050040-040  | 819-050040-070 | 819-050040-090 | 819-050040-150 |
|            | 60mm           | 819-050060-040  | 819-050060-070 | 819-050060-090 | 819-050060-150 |
|            | 80mm           | /               | 819-050080-070 | 819-050080-090 | 819-050080-150 |
|            | 100mm          | /               | 819-050100-070 | 819-050100-090 | 819-050100-150 |
|            | 120mm          | /               | 819-050120-070 | 819-050120-090 | 819-050120-150 |
|            | 150mm          | /               | 819-050150-070 | 819-050150-090 | 819-050150-150 |
|            | 200mm          | /               | 819-050200-070 | 819-050200-090 | 819-050200-150 |
| 6.0mm      | 20mm           | 819-060020-040  | 819-060020-070 | 819-060020-090 | 819-060020-150 |
|            | 30mm           | 819-060030-040  | 819-060030-070 | 819-060030-090 | 819-060030-150 |
|            | 40mm           | 819-060040-040  | 819-060040-070 | 819-060040-090 | 819-060040-150 |
|            | 60mm           | 819-060060-040  | 819-060060-070 | 819-060060-090 | 819-060060-150 |
|            | 80mm           | /               | 819-060080-070 | 819-060080-090 | 819-060080-150 |
|            | 100mm          | /               | 819-060100-070 | 819-060100-090 | 819-060100-150 |
|            | 120mm          | /               | 819-060120-070 | 819-060120-090 | 819-060120-150 |
|            | 150mm          | /               | 819-060150-070 | 819-060150-090 | 819-060150-150 |
|            | 200mm          | /               | 819-060200-070 | 819-060200-090 | 819-060200-150 |
| 7.0mm      | 20mm           | 819-070020-040  | 819-070020-070 | 819-070020-090 | 819-070020-150 |
|            | 30mm           | 819-070030-040  | 819-070030-070 | 819-070030-090 | 819-070030-150 |
|            | 40mm           | 819-070040-040  | 819-070040-070 | 819-070040-090 | 819-070040-150 |
|            | 60mm           | 819-070060-040  | 819-070060-070 | 819-070060-090 | 819-070060-150 |
|            | 80mm           | /               | 819-070080-070 | 819-070080-090 | 819-070080-150 |
|            | 100mm          | /               | 819-070100-070 | 819-070100-090 | 819-070100-150 |
|            | 120mm          | /               | 819-070120-070 | 819-070120-090 | 819-070120-150 |
|            | 150mm          | /               | 819-070150-070 | 819-070150-090 | 819-070150-150 |
|            | 200mm          | /               | 819-070200-070 | 819-070200-090 | 819-070200-150 |
| 8.0mm      | 20mm           | 819-080020-040  | 819-080020-070 | 819-080020-090 | 819-080020-150 |
|            | 30mm           | 819-080030-040  | 819-080030-070 | 819-080030-090 | 819-080030-150 |
|            | 40mm           | 819-080040-040  | 819-080040-070 | 819-080040-090 | 819-080040-150 |
|            | 60mm           | 819-080060-040  | 819-080060-070 | 819-080060-090 | 819-080060-150 |
|            | 80mm           | /               | 819-080080-070 | 819-080080-090 | 819-080080-150 |
|            | 100mm          | /               | 819-080100-070 | 819-080100-090 | 819-080100-150 |
|            | 120mm          | /               | 819-080120-070 | 819-080120-090 | 819-080120-150 |
|            | 150mm          | /               | 819-080150-070 | 819-080150-090 | 819-080150-150 |
|            | 200mm          | /               | 819-080200-070 | 819-080200-090 | 819-080200-150 |
| 9.0mm      | 20mm           | /               | 819-090020-070 | 819-090020-090 | 819-090020-150 |
|            | 30mm           | /               | 819-090030-070 | 819-090030-090 | 819-090030-150 |
|            | 40mm           | /               | 819-090040-070 | 819-090040-090 | 819-090040-150 |
|            | 60mm           | /               | 819-090060-070 | 819-090060-090 | 819-090060-150 |
|            | 80mm           | /               | 819-090080-070 | 819-090080-090 | 819-090080-150 |
|            | 100mm          | /               | 819-090100-070 | 819-090100-090 | 819-090100-150 |
|            | 120mm          | /               | 819-090120-070 | 819-090120-090 | 819-090120-150 |
|            | 150mm          | /               | 819-090150-070 | 819-090150-090 | 819-090150-150 |
|            | 200mm          | /               | 819-090200-070 | 819-090200-090 | 819-090200-150 |
| 10.0mm     | 20mm           | /               | 819-100020-070 | 819-100020-090 | 819-100020-150 |
|            | 30mm           | /               | 819-100030-070 | 819-100030-090 | 819-100030-150 |
|            | 40mm           | /               | 819-100040-070 | 819-100040-090 | 819-100040-150 |
|            | 60mm           | /               | 819-100060-070 | 819-100060-090 | 819-100060-150 |
|            | 80mm           | /               | 819-100080-070 | 819-100080-090 | 819-100080-150 |
|            | 100mm          | /               | 819-100100-070 | 819-100100-090 | 819-100100-150 |
|            | 120mm          | /               | 819-100120-070 | 819-100120-090 | 819-100120-150 |
|            | 150mm          | /               | 819-100150-070 | 819-100150-090 | 819-100150-150 |
|            | 200mm          | /               | 819-100200-070 | 819-100200-090 | 819-100200-150 |

# Castor™ NC

## 0.014" OTW PTA Balloon Dilatation Catheter

Designed to treat BTK lesions and resistant lesions  
Optimized balloon strength RBP up to 22 atm



CE FDA  
2797

### FEATURES

- Optimized crossing profile: Best in class crossing capability for diffused and challenging lesions
- Hydrophilic Coating: Ensures smooth entry to tight lesions
- Low entry profile 0.017": For reaching distal vasculature
- Kink resistant shaft: Smooth transmission through tortuous vasculature

### Nominal Pressure (NP)

12 atm

### Rated Burst Pressure (RBP)

22atm (Ø2.0-4.0mm)

20atm (Ø4.5-6.0mm)

18atm (Ø7.0-8.0mm)

### Sheath Compatibility

4F (Ø2.0-4.0mm)

5F (Ø4.5-6.0mm)

6F (Ø7.0-8.0mm)

### ORDERING INFORMATION

| Balloon OD | Balloon Length | Catheter Length |                |                |
|------------|----------------|-----------------|----------------|----------------|
|            |                | 70cm            | 90cm           | 150cm          |
| 2.0mm      | 10mm           | 816-020010-070  | 816-020010-090 | 816-020010-150 |
|            | 15mm           | 816-020015-070  | 816-020015-090 | 816-020015-150 |
|            | 20mm           | 816-020020-070  | 816-020020-090 | 816-020020-150 |
|            | 30mm           | 816-020030-070  | 816-020030-090 | 816-020030-150 |
|            | 40mm           | 816-020040-070  | 816-020040-090 | 816-020040-150 |
|            | 60mm           | 816-020060-070  | 816-020060-090 | 816-020060-150 |
|            | 80mm           | 816-020080-070  | 816-020080-090 | 816-020080-150 |
|            | 100mm          | 816-020100-070  | 816-020100-090 | 816-020100-150 |
|            | 150mm          | 816-020150-070  | 816-020150-090 | 816-020150-150 |

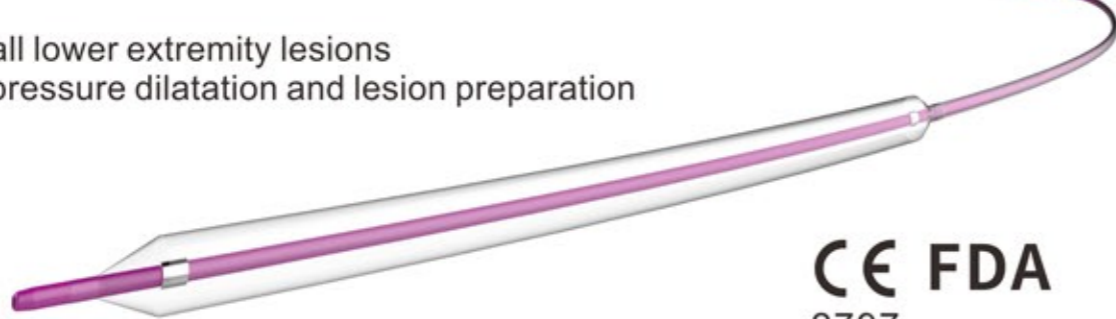
### ORDERING INFORMATION

| Balloon OD | Balloon Length | Catheter Length |                |                | Balloon OD     | Balloon Length | Catheter Length |                |                |
|------------|----------------|-----------------|----------------|----------------|----------------|----------------|-----------------|----------------|----------------|
|            |                | 70cm            | 90cm           | 150cm          |                |                | 70cm            | 90cm           | 150cm          |
| 2.5mm      | 10mm           | 816-025010-070  | 816-025010-090 | 816-025010-150 | 5.0mm          | 10mm           | 816-050010-070  | 816-050010-090 | 816-050010-150 |
|            | 15mm           | 816-025015-070  | 816-025015-090 | 816-025015-150 |                | 15mm           | 816-050015-070  | 816-050015-090 | 816-050015-150 |
|            | 20mm           | 816-025020-070  | 816-025020-090 | 816-025020-150 |                | 20mm           | 816-050020-070  | 816-050020-090 | 816-050020-150 |
|            | 30mm           | 816-025030-070  | 816-025030-090 | 816-025030-150 |                | 30mm           | 816-050030-070  | 816-050030-090 | 816-050030-150 |
|            | 40mm           | 816-025040-070  | 816-025040-090 | 816-025040-150 |                | 40mm           | 816-050040-070  | 816-050040-090 | 816-050040-150 |
|            | 60mm           | 816-025060-070  | 816-025060-090 | 816-025060-150 |                | 60mm           | 816-050060-070  | 816-050060-090 | 816-050060-150 |
|            | 80mm           | 816-025080-070  | 816-025080-090 | 816-025080-150 |                | 80mm           | 816-050080-070  | 816-050080-090 | 816-050080-150 |
|            | 100mm          | 816-025100-070  | 816-025100-090 | 816-025100-150 |                | 100mm          | 816-050100-070  | 816-050100-090 | 816-050100-150 |
|            | 150mm          | 816-025150-070  | 816-025150-090 | 816-025150-150 |                | 150mm          | 816-050150-070  | 816-050150-090 | 816-050150-150 |
|            | 3.0mm          | 10mm            | 816-030010-070 | 816-030010-090 |                | 816-030010-150 | 5.5mm           | 10mm           | 816-055010-070 |
| 15mm       |                | 816-030015-070  | 816-030015-090 | 816-030015-150 | 15mm           | 816-055015-070 |                 | 816-055015-090 | 816-055015-150 |
| 20mm       |                | 816-030020-070  | 816-030020-090 | 816-030020-150 | 20mm           | 816-055020-070 |                 | 816-055020-090 | 816-055020-150 |
| 30mm       |                | 816-030030-070  | 816-030030-090 | 816-030030-150 | 30mm           | 816-055030-070 |                 | 816-055030-090 | 816-055030-150 |
| 40mm       |                | 816-030040-070  | 816-030040-090 | 816-030040-150 | 40mm           | 816-055040-070 |                 | 816-055040-090 | 816-055040-150 |
| 60mm       |                | 816-030060-070  | 816-030060-090 | 816-030060-150 | 60mm           | 816-055060-070 |                 | 816-055060-090 | 816-055060-150 |
| 80mm       |                | 816-030080-070  | 816-030080-090 | 816-030080-150 | 80mm           | 816-055080-070 |                 | 816-055080-090 | 816-055080-150 |
| 100mm      |                | 816-030100-070  | 816-030100-090 | 816-030100-150 | 100mm          | 816-055100-070 |                 | 816-055100-090 | 816-055100-150 |
| 150mm      |                | 816-030150-070  | 816-030150-090 | 816-030150-150 | 150mm          | 816-055150-070 |                 | 816-055150-090 | 816-055150-150 |
| 3.5mm      |                | 10mm            | 816-035010-070 | 816-035010-090 | 816-035010-150 | 6.0mm          |                 | 10mm           | 816-060010-070 |
|            | 15mm           | 816-035015-070  | 816-035015-090 | 816-035015-150 | 15mm           |                | 816-060015-070  | 816-060015-090 | 816-060015-150 |
|            | 20mm           | 816-035020-070  | 816-035020-090 | 816-035020-150 | 20mm           |                | 816-060020-070  | 816-060020-090 | 816-060020-150 |
|            | 30mm           | 816-035030-070  | 816-035030-090 | 816-035030-150 | 30mm           |                | 816-060030-070  | 816-060030-090 | 816-060030-150 |
|            | 40mm           | 816-035040-070  | 816-035040-090 | 816-035040-150 | 40mm           |                | 816-060040-070  | 816-060040-090 | 816-060040-150 |
|            | 60mm           | 816-035060-070  | 816-035060-090 | 816-035060-150 | 60mm           |                | 816-060060-070  | 816-060060-090 | 816-060060-150 |
|            | 80mm           | 816-035080-070  | 816-035080-090 | 816-035080-150 | 80mm           |                | 816-060080-070  | 816-060080-090 | 816-060080-150 |
|            | 100mm          | 816-035100-070  | 816-035100-090 | 816-035100-150 | 100mm          |                | 816-060100-070  | 816-060100-090 | 816-060100-150 |
|            | 150mm          | 816-035150-070  | 816-035150-090 | 816-035150-150 | 150mm          |                | 816-060150-070  | 816-060150-090 | 816-060150-150 |
|            | 4.0mm          | 10mm            | 816-040010-070 | 816-040010-090 | 816-040010-150 |                | 7.0mm           | 10mm           | 816-070010-070 |
| 15mm       |                | 816-040015-070  | 816-040015-090 | 816-040015-150 | 15mm           | 816-070015-070 |                 | 816-070015-090 | 816-070015-150 |
| 20mm       |                | 816-040020-070  | 816-040020-090 | 816-040020-150 | 20mm           | 816-070020-070 |                 | 816-070020-090 | 816-070020-150 |
| 30mm       |                | 816-040030-070  | 816-040030-090 | 816-040030-150 | 30mm           | 816-070030-070 |                 | 816-070030-090 | 816-070030-150 |
| 40mm       |                | 816-040040-070  | 816-040040-090 | 816-040040-150 | 40mm           | 816-070040-070 |                 | 816-070040-090 | 816-070040-150 |
| 60mm       |                | 816-040060-070  | 816-040060-090 | 816-040060-150 | 60mm           | 816-070060-070 |                 | 816-070060-090 | 816-070060-150 |
| 80mm       |                | 816-040080-070  | 816-040080-090 | 816-040080-150 | 80mm           | 816-070080-070 |                 | 816-070080-090 | 816-070080-150 |
| 100mm      |                | 816-040100-070  | 816-040100-090 | 816-040100-150 | 100mm          | 816-070100-070 |                 | 816-070100-090 | 816-070100-150 |
| 150mm      |                | 816-040150-070  | 816-040150-090 | 816-040150-150 | 150mm          | 816-070150-070 |                 | 816-070150-090 | 816-070150-150 |
| 4.5mm      |                | 10mm            | 816-045010-070 | 816-045010-090 | 816-045010-150 | 8.0mm          |                 | 10mm           | 816-080010-070 |
|            | 15mm           | 816-045015-070  | 816-045015-090 | 816-045015-150 | 15mm           |                | 816-080015-070  | 816-080015-090 | 816-080015-150 |
|            | 20mm           | 816-045020-070  | 816-045020-090 | 816-045020-150 | 20mm           |                | 816-080020-070  | 816-080020-090 | 816-080020-150 |
|            | 30mm           | 816-045030-070  | 816-045030-090 | 816-045030-150 | 30mm           |                | 816-080030-070  | 816-080030-090 | 816-080030-150 |
|            | 40mm           | 816-045040-070  | 816-045040-090 | 816-045040-150 | 40mm           |                | 816-080040-070  | 816-080040-090 | 816-080040-150 |
|            | 60mm           | 816-045060-070  | 816-045060-090 | 816-045060-150 | 60mm           |                | 816-080060-070  | 816-080060-090 | 816-080060-150 |
|            | 80mm           | 816-045080-070  | 816-045080-090 | 816-045080-150 | 80mm           |                | 816-080080-070  | 816-080080-090 | 816-080080-150 |
|            | 100mm          | 816-045100-070  | 816-045100-090 | 816-045100-150 | 100mm          |                | 816-080100-070  | 816-080100-090 | 816-080100-150 |
|            | 150mm          | 816-045150-070  | 816-045150-090 | 816-045150-150 | 150mm          |                | 816-080150-070  | 816-080150-090 | 816-080150-150 |

# Achilles™ NC

## 0.018" OTW PTA Balloon Dilatation Catheter

Confident to treat all lower extremity lesions  
Excellent for high pressure dilatation and lesion preparation



CE FDA  
2797

### FEATURES

- Combination of strength and optimal control in routine and challenging cases
- Broad range of sizes available
- Optimized Non-compliant balloon material ensures high pressure balloon inflation up to 22atm
- Flexible tip and low profile shaft design: Provides smooth transmission and maximized pushability

### Nominal Pressure (NP)

12 atm

### Rated Burst Pressure (RBP)

22atm (Ø2.0-4.0mm)

20atm (Ø4.5-6.0mm)

18atm (Ø7.0-8.0mm)

### Sheath Compatibility

4F (Ø2.0-4.0mm)

5F (Ø4.5-5.5mm)

6F (Ø6.0-8.0mm)

### ORDERING INFORMATION

| Balloon OD | Balloon Length | Catheter Length |                |                |                |
|------------|----------------|-----------------|----------------|----------------|----------------|
|            |                | 40cm            | 70cm           | 90cm           | 150cm          |
| 2.0mm      | 10mm           | /               | 804-020010-070 | 804-020010-090 | 804-020010-150 |
|            | 15mm           | /               | 804-020015-070 | 804-020015-090 | 804-020015-150 |
|            | 20mm           | /               | 804-020020-070 | 804-020020-090 | 804-020020-150 |
|            | 30mm           | /               | 804-020030-070 | 804-020030-090 | 804-020030-150 |
|            | 40mm           | /               | 804-020040-070 | 804-020040-090 | 804-020040-150 |
|            | 60mm           | /               | 804-020060-070 | 804-020060-090 | 804-020060-150 |
|            | 80mm           | /               | 804-020080-070 | 804-020080-090 | 804-020080-150 |
|            | 100mm          | /               | 804-020100-070 | 804-020100-090 | 804-020100-150 |
|            | 150mm          | /               | 804-020150-070 | 804-020150-090 | 804-020150-150 |
|            | 2.5mm          | 10mm            | /              | 804-025010-070 | 804-025010-090 |
| 15mm       |                | /               | 804-025015-070 | 804-025015-090 | 804-025015-150 |
| 20mm       |                | /               | 804-025020-070 | 804-025020-090 | 804-025020-150 |
| 30mm       |                | /               | 804-025030-070 | 804-025030-090 | 804-025030-150 |
| 40mm       |                | /               | 804-025040-070 | 804-025040-090 | 804-025040-150 |
| 60mm       |                | /               | 804-025060-070 | 804-025060-090 | 804-025060-150 |
| 80mm       |                | /               | 804-025080-070 | 804-025080-090 | 804-025080-150 |
| 100mm      |                | /               | 804-025100-070 | 804-025100-090 | 804-025100-150 |
| 150mm      |                | /               | 804-025150-070 | 804-025150-090 | 804-025150-150 |

### ORDERING INFORMATION

| Balloon OD | Balloon Length | Catheter Length |                |                |                |
|------------|----------------|-----------------|----------------|----------------|----------------|
|            |                | 40cm            | 70cm           | 90cm           | 150cm          |
| 3.0mm      | 10mm           | /               | 804-030010-070 | 804-030010-090 | 804-030010-150 |
|            | 15mm           | /               | 804-030015-070 | 804-030015-090 | 804-030015-150 |
|            | 20mm           | 804-030020-040  | 804-030020-070 | 804-030020-090 | 804-030020-150 |
|            | 30mm           | 804-030030-040  | 804-030030-070 | 804-030030-090 | 804-030030-150 |
|            | 40mm           | 804-030040-040  | 804-030040-070 | 804-030040-090 | 804-030040-150 |
|            | 60mm           | 804-030060-040  | 804-030060-070 | 804-030060-090 | 804-030060-150 |
|            | 80mm           | /               | 804-030080-070 | 804-030080-090 | 804-030080-150 |
|            | 100mm          | /               | 804-030100-070 | 804-030100-090 | 804-030100-150 |
|            | 150mm          | /               | 804-030150-070 | 804-030150-090 | 804-030150-150 |
|            | 3.5mm          | 10mm            | /              | 804-035010-070 | 804-035010-090 |
| 15mm       |                | /               | 804-035015-070 | 804-035015-090 | 804-035015-150 |
| 20mm       |                | 804-035020-040  | 804-035020-070 | 804-035020-090 | 804-035020-150 |
| 30mm       |                | 804-035030-040  | 804-035030-070 | 804-035030-090 | 804-035030-150 |
| 40mm       |                | 804-035040-040  | 804-035040-070 | 804-035040-090 | 804-035040-150 |
| 60mm       |                | 804-035060-040  | 804-035060-070 | 804-035060-090 | 804-035060-150 |
| 80mm       |                | /               | 804-035080-070 | 804-035080-090 | 804-035080-150 |
| 100mm      |                | /               | 804-035100-070 | 804-035100-090 | 804-035100-150 |
| 150mm      |                | /               | 804-035150-070 | 804-035150-090 | 804-035150-150 |
| 4.0mm      |                | 10mm            | /              | 804-040010-070 | 804-040010-090 |
|            | 15mm           | /               | 804-040015-070 | 804-040015-090 | 804-040015-150 |
|            | 20mm           | 804-040020-040  | 804-040020-070 | 804-040020-090 | 804-040020-150 |
|            | 30mm           | 804-040030-040  | 804-040030-070 | 804-040030-090 | 804-040030-150 |
|            | 40mm           | 804-040040-040  | 804-040040-070 | 804-040040-090 | 804-040040-150 |
|            | 60mm           | 804-040060-040  | 804-040060-070 | 804-040060-090 | 804-040060-150 |
|            | 80mm           | /               | 804-040080-070 | 804-040080-090 | 804-040080-150 |
|            | 100mm          | /               | 804-040100-070 | 804-040100-090 | 804-040100-150 |
|            | 150mm          | /               | 804-040150-070 | 804-040150-090 | 804-040150-150 |
|            | 4.5mm          | 10mm            | /              | 804-045010-070 | 804-045010-090 |
| 15mm       |                | /               | 804-045015-070 | 804-045015-090 | 804-045015-150 |
| 20mm       |                | 804-045020-040  | 804-045020-070 | 804-045020-090 | 804-045020-150 |
| 30mm       |                | 804-045030-040  | 804-045030-070 | 804-045030-090 | 804-045030-150 |
| 40mm       |                | 804-045040-040  | 804-045040-070 | 804-045040-090 | 804-045040-150 |
| 60mm       |                | 804-045060-040  | 804-045060-070 | 804-045060-090 | 804-045060-150 |
| 80mm       |                | /               | 804-045080-070 | 804-045080-090 | 804-045080-150 |
| 100mm      |                | /               | 804-045100-070 | 804-045100-090 | 804-045100-150 |
| 150mm      |                | /               | 804-045150-070 | 804-045150-090 | 804-045150-150 |
| 5.0mm      |                | 10mm            | /              | 804-050010-070 | 804-050010-090 |
|            | 15mm           | /               | 804-050015-070 | 804-050015-090 | 804-050015-150 |
|            | 20mm           | 804-050020-040  | 804-050020-070 | 804-050020-090 | 804-050020-150 |
|            | 30mm           | 804-050030-040  | 804-050030-070 | 804-050030-090 | 804-050030-150 |
|            | 40mm           | 804-050040-040  | 804-050040-070 | 804-050040-090 | 804-050040-150 |
|            | 60mm           | 804-050060-040  | 804-050060-070 | 804-050060-090 | 804-050060-150 |
|            | 80mm           | /               | 804-050080-070 | 804-050080-090 | 804-050080-150 |
|            | 100mm          | /               | 804-050100-070 | 804-050100-090 | 804-050100-150 |
|            | 150mm          | /               | 804-050150-070 | 804-050150-090 | 804-050150-150 |
|            | 5.5mm          | 10mm            | /              | 804-055010-070 | 804-055010-090 |
| 15mm       |                | /               | 804-055015-070 | 804-055015-090 | 804-055015-150 |
| 20mm       |                | 804-055020-040  | 804-055020-070 | 804-055020-090 | 804-055020-150 |
| 30mm       |                | 804-055030-040  | 804-055030-070 | 804-055030-090 | 804-055030-150 |
| 40mm       |                | 804-055040-040  | 804-055040-070 | 804-055040-090 | 804-055040-150 |
| 60mm       |                | 804-055060-040  | 804-055060-070 | 804-055060-090 | 804-055060-150 |
| 80mm       |                | /               | 804-055080-070 | 804-055080-090 | 804-055080-150 |
| 100mm      |                | /               | 804-055100-070 | 804-055100-090 | 804-055100-150 |
| 150mm      |                | /               | 804-055150-070 | 804-055150-090 | 804-055150-150 |
| 6.0mm      |                | 10mm            | /              | 804-060010-070 | 804-060010-090 |
|            | 15mm           | /               | 804-060015-070 | 804-060015-090 | 804-060015-150 |
|            | 20mm           | 804-060020-040  | 804-060020-070 | 804-060020-090 | 804-060020-150 |
|            | 30mm           | 804-060030-040  | 804-060030-070 | 804-060030-090 | 804-060030-150 |
|            | 40mm           | 804-060040-040  | 804-060040-070 | 804-060040-090 | 804-060040-150 |
|            | 60mm           | 804-060060-040  | 804-060060-070 | 804-060060-090 | 804-060060-150 |
|            | 80mm           | /               | 804-060080-070 | 804-060080-090 | 804-060080-150 |
|            | 100mm          | /               | 804-060100-070 | 804-060100-090 | 804-060100-150 |
|            | 150mm          | /               | 804-060150-070 | 804-060150-090 | 804-060150-150 |
|            | 7.0mm          | 10mm            | /              | 804-070010-070 | 804-070010-090 |
| 15mm       |                | /               | 804-070015-070 | 804-070015-090 | 804-070015-150 |
| 20mm       |                | 804-070020-040  | 804-070020-070 | 804-070020-090 | 804-070020-150 |
| 30mm       |                | 804-070030-040  | 804-070030-070 | 804-070030-090 | 804-070030-150 |
| 40mm       |                | 804-070040-040  | 804-070040-070 | 804-070040-090 | 804-070040-150 |
| 60mm       |                | 804-070060-040  | 804-070060-070 | 804-070060-090 | 804-070060-150 |
| 80mm       |                | /               | 804-070080-070 | 804-070080-090 | 804-070080-150 |
| 100mm      |                | /               | 804-070100-070 | 804-070100-090 | 804-070100-150 |
| 150mm      |                | /               | 804-070150-070 | 804-070150-090 | 804-070150-150 |
| 8.0mm      |                | 10mm            | /              | 804-080010-070 | 804-080010-090 |
|            | 15mm           | /               | 804-080015-070 | 804-080015-090 | 804-080015-150 |
|            | 20mm           | 804-080020-040  | 804-080020-070 | 804-080020-090 | 804-080020-150 |
|            | 30mm           | 804-080030-040  | 804-080030-070 | 804-080030-090 | 804-080030-150 |
|            | 40mm           | 804-080040-040  | 804-080040-070 | 804-080040-090 | 804-080040-150 |
|            | 60mm           | 804-080060-040  | 804-080060-070 | 804-080060-090 | 804-080060-150 |
|            | 80mm           | /               | 804-080080-070 | 804-080080-090 | 804-080080-150 |
|            | 100mm          | /               | 804-080100-070 | 804-080100-090 | 804-080100-150 |
|            | 150mm          | /               | 804-080150-070 | 804-080150-090 | 804-080150-150 |

# Hermes™ NC

## 0.035" OTW PTA Balloon Dilatation Catheter

Engineered for AV access  
Designed to treat fibrotic and calcified lesions



CE FDA  
2797

### FEATURES

- Excellent pushability: Seamless tip-to-shaft design for push force transmission
- Lowest tip profile 0.038" : Facilitates lesion crossing with ease
- Balanced non-compliant balloon: Controlled compliance to exert focal pressure on the lesion and safe dilatation
- Broad size range: Diameter: 3.0 - 10.0mm; Length: 20 - 150mm

### Nominal Pressure (NP)

12 atm

### Rated Burst Pressure (RBP)

22atm (Ø3.0-4.0mm)

20atm (Ø5.0-6.0mm)

18atm (Ø7.0-10.0mm)

### Sheath Compatibility

5F (Ø3.0-5.0mm)

6F (Ø6.0-8.0mm)

7F (Ø9.0-10.0mm)

### ORDERING INFORMATION

| Balloon OD | Balloon Length | Catheter Length |                |                |                |
|------------|----------------|-----------------|----------------|----------------|----------------|
|            |                | 40cm            | 70cm           | 90cm           | 150cm          |
| 3.0mm      | 20mm           | 820-030020-040  | 820-030020-070 | 820-030020-090 | 820-030020-150 |
|            | 30mm           | 820-030030-040  | 820-030030-070 | 820-030030-090 | 820-030030-150 |
|            | 40mm           | 820-030040-040  | 820-030040-070 | 820-030040-090 | 820-030040-150 |
|            | 60mm           | 820-030060-040  | 820-030060-070 | 820-030060-090 | 820-030060-150 |
|            | 80mm           | /               | 820-030080-070 | 820-030080-090 | 820-030080-150 |
|            | 100mm          | /               | 820-030100-070 | 820-030100-090 | 820-030100-150 |
| 4.0mm      | 150mm          | /               | 820-030150-070 | 820-030150-090 | 820-030150-150 |
|            | 20mm           | 820-040020-040  | 820-040020-070 | 820-040020-090 | 820-040020-150 |
|            | 30mm           | 820-040030-040  | 820-040030-070 | 820-040030-090 | 820-040030-150 |
|            | 40mm           | 820-040040-040  | 820-040040-070 | 820-040040-090 | 820-040040-150 |
|            | 60mm           | 820-040060-040  | 820-040060-070 | 820-040060-090 | 820-040060-150 |
|            | 80mm           | /               | 820-040080-070 | 820-040080-090 | 820-040080-150 |
| 100mm      | /              | 820-040100-070  | 820-040100-090 | 820-040100-150 |                |
|            | 150mm          | /               | 820-040150-070 | 820-040150-090 | 820-040150-150 |

### ORDERING INFORMATION

| Balloon OD | Balloon Length | Catheter Length |                |                |                |
|------------|----------------|-----------------|----------------|----------------|----------------|
|            |                | 40cm            | 70cm           | 90cm           | 150cm          |
| 5.0mm      | 20mm           | 820-050020-040  | 820-050020-070 | 820-050020-090 | 820-050020-150 |
|            | 30mm           | 820-050030-040  | 820-050030-070 | 820-050030-090 | 820-050030-150 |
|            | 40mm           | 820-050040-040  | 820-050040-070 | 820-050040-090 | 820-050040-150 |
|            | 60mm           | 820-050060-040  | 820-050060-070 | 820-050060-090 | 820-050060-150 |
|            | 80mm           | /               | 820-050080-070 | 820-050080-090 | 820-050080-150 |
|            | 100mm          | /               | 820-050100-070 | 820-050100-090 | 820-050100-150 |
|            | 150mm          | /               | 820-050150-070 | 820-050150-090 | 820-050150-150 |
| 6.0mm      | 20mm           | 820-060020-040  | 820-060020-070 | 820-060020-090 | 820-060020-150 |
|            | 30mm           | 820-060030-040  | 820-060030-070 | 820-060030-090 | 820-060030-150 |
|            | 40mm           | 820-060040-040  | 820-060040-070 | 820-060040-090 | 820-060040-150 |
|            | 60mm           | 820-060060-040  | 820-060060-070 | 820-060060-090 | 820-060060-150 |
|            | 80mm           | /               | 820-060080-070 | 820-060080-090 | 820-060080-150 |
|            | 100mm          | /               | 820-060100-070 | 820-060100-090 | 820-060100-150 |
|            | 150mm          | /               | 820-060150-070 | 820-060150-090 | 820-060150-150 |
| 7.0mm      | 20mm           | 820-070020-040  | 820-070020-070 | 820-070020-090 | 820-070020-150 |
|            | 30mm           | 820-070030-040  | 820-070030-070 | 820-070030-090 | 820-070030-150 |
|            | 40mm           | 820-070040-040  | 820-070040-070 | 820-070040-090 | 820-070040-150 |
|            | 60mm           | 820-070060-040  | 820-070060-070 | 820-070060-090 | 820-070060-150 |
|            | 80mm           | /               | 820-070080-070 | 820-070080-090 | 820-070080-150 |
|            | 100mm          | /               | 820-070100-070 | 820-070100-090 | 820-070100-150 |
|            | 150mm          | /               | 820-070150-070 | 820-070150-090 | 820-070150-150 |
| 8.0mm      | 20mm           | 820-080020-040  | 820-080020-070 | 820-080020-090 | 820-080020-150 |
|            | 30mm           | 820-080030-040  | 820-080030-070 | 820-080030-090 | 820-080030-150 |
|            | 40mm           | 820-080040-040  | 820-080040-070 | 820-080040-090 | 820-080040-150 |
|            | 60mm           | 820-080060-040  | 820-080060-070 | 820-080060-090 | 820-080060-150 |
|            | 80mm           | /               | 820-080080-070 | 820-080080-090 | 820-080080-150 |
|            | 100mm          | /               | 820-080100-070 | 820-080100-090 | 820-080100-150 |
|            | 150mm          | /               | 820-080150-070 | 820-080150-090 | 820-080150-150 |
| 9.0mm      | 20mm           | /               | 820-090020-070 | 820-090020-090 | 820-090020-150 |
|            | 30mm           | /               | 820-090030-070 | 820-090030-090 | 820-090030-150 |
|            | 40mm           | /               | 820-090040-070 | 820-090040-090 | 820-090040-150 |
|            | 60mm           | /               | 820-090060-070 | 820-090060-090 | 820-090060-150 |
|            | 80mm           | /               | 820-090080-070 | 820-090080-090 | 820-090080-150 |
|            | 100mm          | /               | 820-090100-070 | 820-090100-090 | 820-090100-150 |
|            | 150mm          | /               | 820-090150-070 | 820-090150-090 | 820-090150-150 |
| 10.0mm     | 20mm           | /               | 820-100020-070 | 820-100020-090 | 820-100020-150 |
|            | 30mm           | /               | 820-100030-070 | 820-100030-090 | 820-100030-150 |
|            | 40mm           | /               | 820-100040-070 | 820-100040-090 | 820-100040-150 |
|            | 60mm           | /               | 820-100060-070 | 820-100060-090 | 820-100060-150 |
|            | 80mm           | /               | 820-100080-070 | 820-100080-090 | 820-100080-150 |
|            | 100mm          | /               | 820-100100-070 | 820-100100-090 | 820-100100-150 |
|            | 150mm          | /               | 820-100150-070 | 820-100150-090 | 820-100150-150 |

# Tiche™ NC

## 0.035" OTW PTA Balloon Dilatation Catheter

Deliverable high pressure with a low tip entry profile 0.040"



### FEATURES

- Dual lumen design to shorten the deflation time
- RBP up to 24 atm, ABP up to 32 atm
- Unique shaft design enables great trackability
- Complete Size Portfolio: Balloon lengths 20–200 mm; Diameters 3–12 mm; Shafts 40 cm, 75 cm, 120cm, 135 cm

### Nominal Pressure (NP)

10,12 atm

### Sheath Compatibility

- 5F (φ3.0-7.0mm)
- 6F (φ8.0-10.0mm)
- 7F (φ12.0mm)

### Rated Burst Pressure (RBP)

- 24atm (φ2.0-5.0x20-200mm, φ6.0x20-100mm)
- 22atm (φ6.0x120-200mm)
- 20atm (φ7.0-8.0x20-100mm)
- 18atm (φ7.0-8.0x120-200mm, φ9.0x20-80mm)
- 14atm (φ10.0-12.0x20-80mm)

### ORDERING INFORMATION

| Balloon OD | Balloon Length | Catheter Length |           |           |           |
|------------|----------------|-----------------|-----------|-----------|-----------|
|            |                | 40cm            | 75cm      | 120cm     | 135cm     |
| 3.0mm      | 20mm           | 34-030240       | 34-030275 | 34-030212 | 34-030213 |
|            | 30mm           | 34-030340       | 34-030375 | 34-030312 | 34-030313 |
|            | 40mm           | 34-030440       | 34-030475 | 34-030412 | 34-030413 |
|            | 60mm           | 34-030640       | 34-030675 | 34-030612 | 34-030613 |
|            | 80mm           | 34-030840       | 34-030875 | 34-030812 | 34-030813 |
|            | 100mm          | 34-031040       | 34-031075 | 34-031012 | 34-031013 |
|            | 120mm          | /               | 34-031275 | 34-031212 | 34-031213 |
|            | 150mm          | /               | 34-031575 | 34-031512 | 34-031513 |
|            | 180mm          | /               | 34-031875 | 34-031812 | 34-031813 |
|            | 200mm          | /               | 34-032075 | 34-032012 | 34-032013 |

### ORDERING INFORMATION

| Balloon OD | Balloon Length | Catheter Length |           |           |           |           |
|------------|----------------|-----------------|-----------|-----------|-----------|-----------|
|            |                | 40cm            | 75cm      | 120cm     | 135cm     |           |
| 4.0mm      | 20mm           | 34-040240       | 34-040275 | 34-040212 | 34-040213 |           |
|            | 30mm           | 34-040340       | 34-040375 | 34-040312 | 34-040313 |           |
|            | 40mm           | 34-040440       | 34-040475 | 34-040412 | 34-040413 |           |
|            | 60mm           | 34-040640       | 34-040675 | 34-040612 | 34-040613 |           |
|            | 80mm           | 34-040840       | 34-040875 | 34-040812 | 34-040813 |           |
|            | 100mm          | 34-041040       | 34-041075 | 34-041012 | 34-041013 |           |
|            | 120mm          | /               | 34-041275 | 34-041212 | 34-041213 |           |
|            | 150mm          | /               | 34-041575 | 34-041512 | 34-041513 |           |
|            | 180mm          | /               | 34-041875 | 34-041812 | 34-041813 |           |
|            | 200mm          | /               | 34-042075 | 34-042012 | 34-042013 |           |
|            | 5.0mm          | 20mm            | 34-050240 | 34-050275 | 34-050212 | 34-050213 |
|            |                | 30mm            | 34-050340 | 34-050375 | 34-050312 | 34-050313 |
| 40mm       |                | 34-050440       | 34-050475 | 34-050412 | 34-050413 |           |
| 60mm       |                | 34-050640       | 34-050675 | 34-050612 | 34-050613 |           |
| 80mm       |                | 34-050840       | 34-050875 | 34-050812 | 34-050813 |           |
| 100mm      |                | 34-051040       | 34-051075 | 34-051012 | 34-051013 |           |
| 120mm      |                | 34-051240       | 34-051275 | 34-051212 | 34-051213 |           |
| 150mm      |                | /               | 34-051575 | 34-051512 | 34-051513 |           |
| 180mm      |                | /               | 34-051875 | 34-051812 | 34-051813 |           |
| 200mm      |                | /               | 34-052075 | 34-052012 | 34-052013 |           |
| 6.0mm      |                | 20mm            | 34-060240 | 34-060275 | 34-060212 | 34-060213 |
|            |                | 30mm            | 34-060340 | 34-060375 | 34-060312 | 34-060313 |
|            | 40mm           | 34-060440       | 34-060475 | 34-060412 | 34-060413 |           |
|            | 60mm           | 34-060640       | 34-060675 | 34-060612 | 34-060613 |           |
|            | 80mm           | 34-060840       | 34-060875 | 34-060812 | 34-060813 |           |
|            | 100mm          | 34-061040       | 34-061075 | 34-061012 | 34-061013 |           |
|            | 120mm          | 34-061240       | 34-061275 | 34-061212 | 34-061213 |           |
|            | 150mm          | /               | 34-061575 | 34-061512 | 34-061513 |           |
|            | 180mm          | /               | 34-061875 | 34-061812 | 34-061813 |           |
|            | 200mm          | /               | 34-062075 | 34-062012 | 34-062013 |           |
|            | 7.0mm          | 20mm            | 34-070240 | 34-070275 | 34-070212 | 34-070213 |
|            |                | 30mm            | 34-070340 | 34-070375 | 34-070312 | 34-070313 |
| 40mm       |                | 34-070440       | 34-070475 | 34-070412 | 34-070413 |           |
| 60mm       |                | 34-070640       | 34-070675 | 34-070612 | 34-070613 |           |
| 80mm       |                | 34-070840       | 34-070875 | 34-070812 | 34-070813 |           |
| 100mm      |                | 34-071040       | 34-071075 | 34-071012 | 34-071013 |           |
| 120mm      |                | /               | 34-071275 | 34-071212 | 34-071213 |           |
| 150mm      |                | /               | 34-071575 | 34-071512 | 34-071513 |           |
| 180mm      |                | /               | 34-071875 | 34-071812 | 34-071813 |           |
| 200mm      |                | /               | 34-072075 | 34-072012 | 34-072013 |           |
| 8.0mm      |                | 20mm            | 34-080240 | 34-080275 | 34-080212 | 34-080213 |
|            |                | 30mm            | 34-080340 | 34-080375 | 34-080312 | 34-080313 |
|            | 40mm           | 34-080440       | 34-080475 | 34-080412 | 34-080413 |           |
|            | 60mm           | 34-080640       | 34-080675 | 34-080612 | 34-080613 |           |
|            | 80mm           | 34-080840       | 34-080875 | 34-080812 | 34-080813 |           |
|            | 100mm          | 34-081040       | 34-081075 | 34-081012 | 34-081013 |           |
|            | 120mm          | /               | 34-081275 | 34-081212 | 34-081213 |           |
|            | 150mm          | /               | 34-081575 | 34-081512 | 34-081513 |           |
|            | 180mm          | /               | 34-081875 | 34-081812 | 34-081813 |           |
|            | 200mm          | /               | 34-082075 | 34-082012 | 34-082013 |           |
|            | 9.0mm          | 20mm            | 34-090240 | 34-090275 | 34-090212 | 34-090213 |
|            |                | 30mm            | 34-090340 | 34-090375 | 34-090312 | 34-090313 |
| 40mm       |                | 34-090440       | 34-090475 | 34-090412 | 34-090413 |           |
| 60mm       |                | 34-090640       | 34-090675 | 34-090612 | 34-090613 |           |
| 80mm       |                | 34-090840       | 34-090875 | 34-090812 | 34-090813 |           |
| 10.0mm     | 20mm           | 34-100240       | 34-100275 | 34-100212 | 34-100213 |           |
|            | 30mm           | 34-100340       | 34-100375 | 34-100312 | 34-100313 |           |
|            | 40mm           | 34-100440       | 34-100475 | 34-100412 | 34-100413 |           |
|            | 60mm           | 34-100640       | 34-100675 | 34-100612 | 34-100613 |           |
| 12.0mm     | 20mm           | 34-120240       | 34-120275 | 34-120212 | 34-120213 |           |
|            | 30mm           | 34-120340       | 34-120375 | 34-120312 | 34-120313 |           |
|            | 40mm           | 34-120440       | 34-120475 | 34-120412 | 34-120413 |           |
|            | 60mm           | 34-120640       | 34-120675 | 34-120612 | 34-120613 |           |
| 80mm       | 34-120840      | 34-120875       | 34-120812 | 34-120813 |           |           |

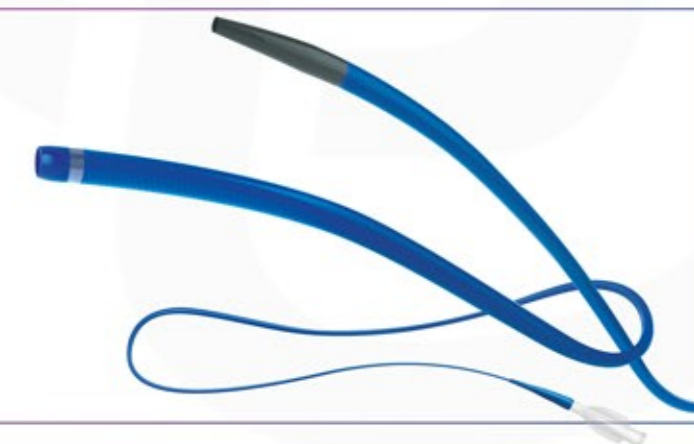


# Interventional Accessories

- Pronavi™ Microcatheter
- Conger™ Hydrophilic Guidewires
- Freepath™ Catheter Sheath Introducer System
- Non-Vascular Guide Wires
- Introducer Sheath Sets
- Y Connector Sets
- Balloon Inflation Devices
- Connecting Tubings
- Introducer Needles
- Manifolds
- Radial Artery Tourniquets
- Dose-Control Syringes
- Angiographic Syringe & Accessories

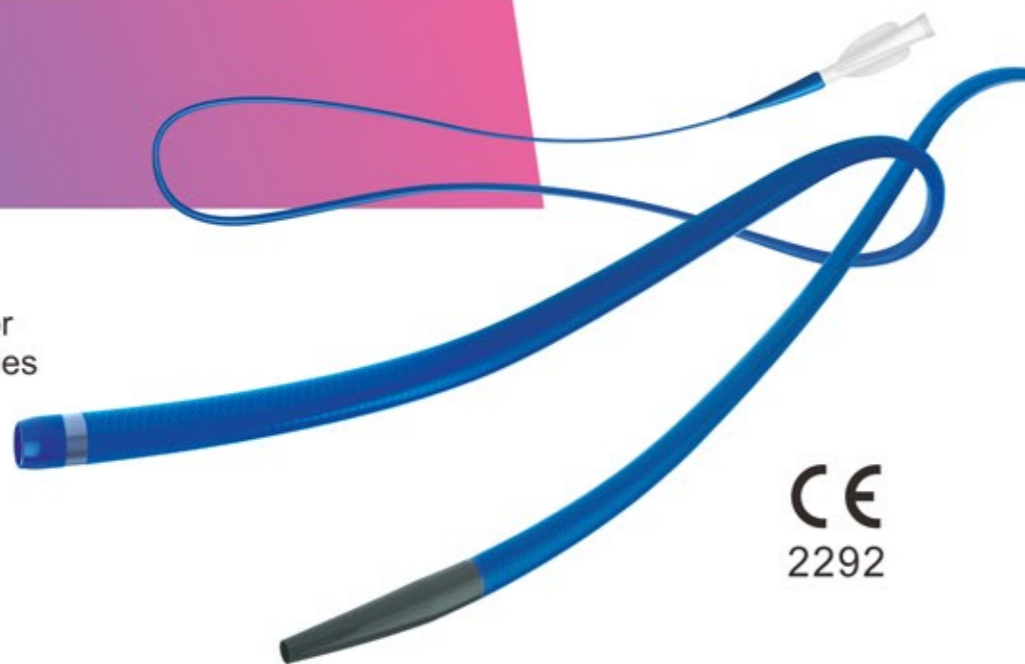
**Pronavi™**  
**Microcatheter**

Advance Through Tortuosity



# Pronavi™ Microcatheter

Advance Through Tortuosity  
Guidewire support catheter for  
coronary and peripheral arteries



CE  
2292

## FEATURES

- Two Kinds of Tip Design  
Pronavi 1.7F: Balanced tip with small profile achieves easy navigation in tortuous and complex anatomy  
Pronavi 1.9F: The radiopaque tapered soft tip with tungsten powder provides exceptional visibility, durability and pushability through tight calcified lesions and interstitial branch.
- Reinforced Braided Construction Provides superior pushability, trackability, catheter control, kink resistance and flexibility from hub to tip
- Super-Selective Tip Injection
- Providing guide wire support

## ORDERING INFORMATION

| Catalog No. | Outer Diameter |              |                | Inner Diameter |            | Catheter Length | Guide Wire Compatibility |
|-------------|----------------|--------------|----------------|----------------|------------|-----------------|--------------------------|
|             | Tip            | Distal shaft | Proximal shaft | Tip            | Shaft      |                 |                          |
| MC17-135    | 1.7F           | 1.7F         | 2.5F           | 0.016 inch     | 0.021 inch | 135cm           | 0.014"                   |
| MC17-150    | 1.7F           | 1.7F         | 2.5F           | 0.016 inch     | 0.021 inch | 150cm           | 0.014"                   |
| MC17-162    | 1.7F           | 1.7F         | 2.5F           | 0.016 inch     | 0.021 inch | 162cm           | 0.014"                   |
| MC19-135    | 1.4F           | 1.9F         | 2.5F           | 0.016 inch     | 0.021 inch | 135cm           | 0.014"                   |
| MC19-150    | 1.4F           | 1.9F         | 2.5F           | 0.016 inch     | 0.021 inch | 150cm           | 0.014"                   |
| MC19-162    | 1.4F           | 1.9F         | 2.5F           | 0.016 inch     | 0.021 inch | 162cm           | 0.014"                   |

# Conger™ Hydrophilic Guidewires

Designed for reliable vascular access  
Smooth passage through tortuous  
anatomy and tight lesions



CE  
2797

## FEATURES

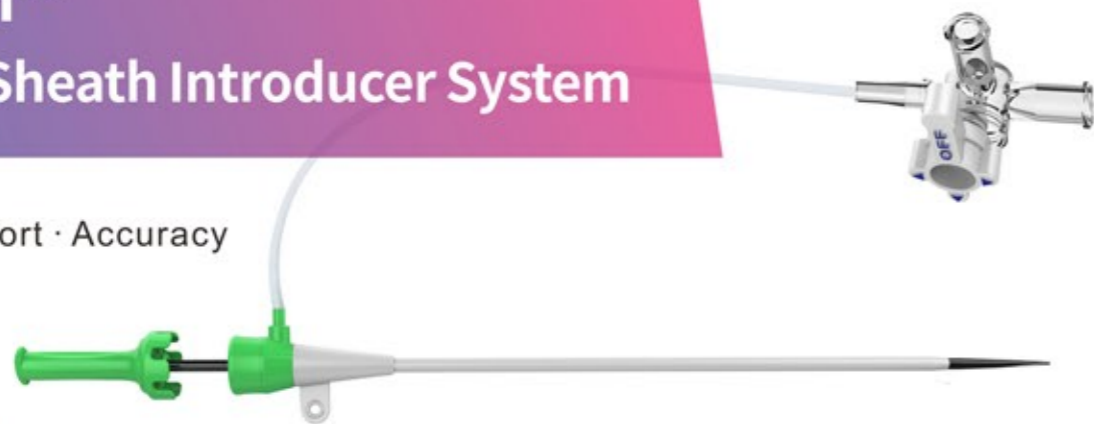
- Durable Hydrophilic Coating to facilitate crossing of tight lesions
- Dynamic nitinol Core-to-tip intended to promote pushability for easy advancement
- Excellent traceability and pushability
- Various configurations accommodate a wide range of clinical situations

## ORDERING INFORMATION

| Catalogue No. | Tip Shape | Hardness | OD(inch) | Length(cm) | Catalogue No. | Tip Shape | Hardness | OD(inch) | Length(cm) |
|---------------|-----------|----------|----------|------------|---------------|-----------|----------|----------|------------|
| HNS-025-45    | Straight  | Standard | 0.025    | 45         | HNA-035-80    | Angled    | Standard | 0.035    | 80         |
| HNA-025-45    | Angled    | Standard | 0.025    | 45         | HNS-035-150   | Straight  | Standard | 0.035    | 150        |
| HNS-025-80    | Straight  | Standard | 0.025    | 80         | HNA-035-150   | Angled    | Standard | 0.035    | 150        |
| HNA-025-80    | Angled    | Standard | 0.025    | 80         | HXS-035-150   | Straight  | Stiff    | 0.035    | 150        |
| HNS-025-150   | Straight  | Standard | 0.025    | 150        | HXA-035-150   | Angled    | Stiff    | 0.035    | 150        |
| HNA-025-150   | Angled    | Standard | 0.025    | 150        | HNS-035-180   | Straight  | Standard | 0.035    | 180        |
| HNS-025-180   | Straight  | Standard | 0.025    | 180        | HNA-035-180   | Angled    | Standard | 0.035    | 180        |
| HNA-025-180   | Angled    | Standard | 0.025    | 180        | HXS-035-180   | Straight  | Stiff    | 0.035    | 180        |
| HNS-025-260   | Straight  | Standard | 0.025    | 260        | HXA-035-180   | Angled    | Stiff    | 0.035    | 180        |
| HNA-025-260   | Angled    | Standard | 0.025    | 260        | HNS-035-230   | Straight  | Standard | 0.035    | 230        |
| HNS-032-150   | Straight  | Standard | 0.032    | 150        | HNA-035-230   | Angled    | Standard | 0.035    | 230        |
| HNA-032-150   | Angled    | Standard | 0.032    | 150        | HXS-035-230   | Straight  | Stiff    | 0.035    | 230        |
| HNS-032-180   | Straight  | Standard | 0.032    | 180        | HXA-035-230   | Angled    | Stiff    | 0.035    | 230        |
| HNA-032-180   | Angled    | Standard | 0.032    | 180        | HNS-035-260   | Straight  | Standard | 0.035    | 260        |
| HNS-032-230   | Straight  | Standard | 0.032    | 230        | HNA-035-260   | Angled    | Standard | 0.035    | 260        |
| HNA-032-230   | Angled    | Standard | 0.032    | 230        | HXS-035-260   | Straight  | Stiff    | 0.035    | 260        |
| HNS-032-260   | Straight  | Standard | 0.032    | 260        | HXA-035-260   | Angled    | Stiff    | 0.035    | 260        |
| HNA-032-260   | Angled    | Standard | 0.032    | 260        | HNS-038-150   | Straight  | Standard | 0.038    | 150        |
| HNS-035-45    | Straight  | Standard | 0.035    | 45         | HNA-038-150   | Angled    | Standard | 0.038    | 150        |
| HNA-035-45    | Angled    | Standard | 0.035    | 45         | HNS-038-180   | Straight  | Standard | 0.038    | 180        |
| HNS-035-80    | Straight  | Standard | 0.035    | 80         | HNA-038-180   | Angled    | Standard | 0.038    | 180        |

# Freepath™ Catheter Sheath Introducer System

Safety · Comfort · Accuracy



## FEATURES

- Smooth transition between dilator and sheath to avoid puncture trauma
- Superior hydrophilic coating on both dilator and sheath
- High kink resistance
- Sophisticated tapered tip for easy entry
- Available lengths: 7, 10, 12, 25 cm
- Color coded : 4F—Red      5F—Grey  
6F—Green      7F—Orange

## ORDERING INFORMATION

| Catalog NO | French | Colour | Length | Guide Wire    | Introducer Needle | Syringe |
|------------|--------|--------|--------|---------------|-------------------|---------|
| H-S-47     | 4F     | Red    | 7cm    | 0.025" x 45cm | 20G x 1.5"        | 2.5ml   |
| H-S-57     | 5F     | Gray   |        |               |                   |         |
| H-S-67     | 6F     | Green  |        |               |                   |         |
| H-S-77     | 7F     | Orange |        |               |                   |         |
| H-S-510    | 5F     | Gray   | 10cm   | 0.035" x 45cm | 18G x 2.75"       |         |
| H-S-610    | 6F     | Green  |        |               |                   |         |
| H-S-710    | 7F     | Orange |        |               |                   |         |
| H-N-4      | 4F     | Red    | 12cm   | 0.025" x 45cm | 20G x 1.5"        |         |
| H-N-5      | 5F     | Gray   |        |               |                   |         |
| H-N-6      | 6F     | Green  |        |               |                   |         |
| H-N-7      | 7F     | Orange |        |               |                   |         |
| H-L-5      | 5F     | Gray   | 25cm   | 0.035" x 80cm | 18G x 2.75"       |         |
| H-L-6      | 6F     | Green  |        |               |                   |         |
| H-L-7      | 7F     | Orange |        |               |                   |         |
| H-N-4T     | 4F     | Red    | 16cm   | 0.025" x 45cm | 20G x 1.5"        |         |
| H-N-5T     | 5F     | Gray   |        |               |                   |         |
| H-N-6T     | 6F     | Green  |        |               |                   |         |
| H-N-7T     | 7F     | Orange |        |               |                   |         |

\*CE not available

# Non-Vascular Guide Wires

CE  
0197



## INTRODUCTION

- Teflon coating provides excellent crossability for other interventional devices and protects against thrombus formation
- Customized diameters and lengths are available

## ORDERING INFORMATION

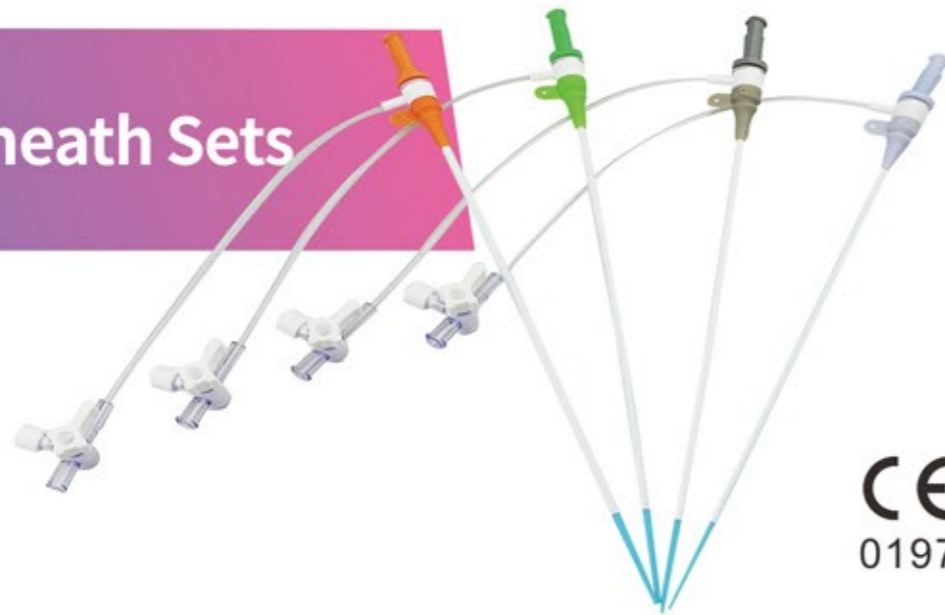
### With PTFE Coating

| 0.018"         | 0.021"         | 0.025"         | 0.032"         | 0.035"         | 0.038"         | Length (cm) | Tip Shape |
|----------------|----------------|----------------|----------------|----------------|----------------|-------------|-----------|
| BM-GWC018-45S  | BM-GWC021-45S  | BM-GWC025-45S  | BM-GWC032-45S  | BM-GWC035-45S  | BM-GWC038-45S  | 45          | Straight  |
| BM-GWC018-45J  | BM-GWC021-45J  | BM-GWC025-45J  | BM-GWC032-45J  | BM-GWC035-45J  | BM-GWC038-45J  | 45          | J         |
| BM-GWC018-60S  | BM-GWC021-60S  | BM-GWC025-60S  | BM-GWC032-60S  | BM-GWC035-60S  | BM-GWC038-60S  | 60          | Straight  |
| BM-GWC018-60J  | BM-GWC021-60J  | BM-GWC025-60J  | BM-GWC032-60J  | BM-GWC035-60J  | BM-GWC038-60J  | 60          | J         |
| BM-GWC018-80S  | BM-GWC021-80S  | BM-GWC025-80S  | BM-GWC032-80S  | BM-GWC035-80S  | BM-GWC038-80S  | 80          | Straight  |
| BM-GWC018-80J  | BM-GWC021-80J  | BM-GWC025-80J  | BM-GWC032-80J  | BM-GWC035-80J  | BM-GWC038-80J  | 80          | J         |
| BM-GWC018-120S | BM-GWC021-120S | BM-GWC025-120S | BM-GWC032-120S | BM-GWC035-120S | BM-GWC038-120S | 120         | Straight  |
| BM-GWC018-120J | BM-GWC021-120J | BM-GWC025-120J | BM-GWC032-120J | BM-GWC035-120J | BM-GWC038-120J | 120         | J         |
| BM-GWC018-150S | BM-GWC021-150S | BM-GWC025-150S | BM-GWC032-150S | BM-GWC035-150S | BM-GWC038-150S | 150         | Straight  |
| BM-GWC018-150J | BM-GWC021-150J | BM-GWC025-150J | BM-GWC032-150J | BM-GWC035-150J | BM-GWC038-150J | 150         | J         |
| BM-GWC018-180S | BM-GWC021-180S | BM-GWC025-180S | BM-GWC032-180S | BM-GWC035-180S | BM-GWC038-180S | 180         | Straight  |
| BM-GWC018-180J | BM-GWC021-180J | BM-GWC025-180J | BM-GWC032-180J | BM-GWC035-180J | BM-GWC038-180J | 180         | J         |
| BM-GWC018-260S | BM-GWC021-260S | BM-GWC025-260S | BM-GWC032-260S | BM-GWC035-260S | BM-GWC038-260S | 260         | Straight  |
| BM-GWC018-260J | BM-GWC021-260J | BM-GWC025-260J | BM-GWC032-260J | BM-GWC035-260J | BM-GWC038-260J | 260         | J         |

### Without Coating

| 0.018"       | 0.021"       | 0.025"        | 0.032"        | 0.035"        | 0.038"        | Length (cm) | Tip Shape |
|--------------|--------------|---------------|---------------|---------------|---------------|-------------|-----------|
| BM-GW018-45S | BM-GW021-45S | BM-GW025-45S  | BM-GW032-45S  | BM-GW035-45S  | BM-GW038-45S  | 45          | Straight  |
| BM-GW018-45J | BM-GW021-45J | BM-GW025-45J  | BM-GW032-45J  | BM-GW035-45J  | BM-GW038-45J  | 45          | J         |
| BM-GW018-60S | BM-GW021-60S | BM-GW025-60S  | BM-GW032-60S  | BM-GW035-60S  | BM-GW038-60S  | 60          | Straight  |
| BM-GW018-60J | BM-GW021-60J | BM-GW025-60J  | BM-GW032-60J  | BM-GW035-60J  | BM-GW038-60J  | 60          | J         |
| /            | /            | BM-GW025-80S  | BM-GW032-80S  | BM-GW035-80S  | BM-GW038-80S  | 80          | Straight  |
| /            | /            | BM-GW025-80J  | BM-GW032-80J  | BM-GW035-80J  | BM-GW038-80J  | 80          | J         |
| /            | /            | BM-GW025-120S | BM-GW032-120S | BM-GW035-120S | BM-GW038-120S | 120         | Straight  |
| /            | /            | BM-GW025-120J | BM-GW032-120J | BM-GW035-120J | BM-GW038-120J | 120         | J         |
| /            | /            | BM-GW025-150S | BM-GW032-150S | BM-GW035-150S | BM-GW038-150S | 150         | Straight  |
| /            | /            | BM-GW025-150J | BM-GW032-150J | BM-GW035-150J | BM-GW038-150J | 150         | J         |

# Introducer Sheath Sets



## FEATURES

- The sheath offers excellent kink resistance and flexibility with smooth transitions between cannula, dilator and guide wire
- Smooth tapered tip results in low insertion force, avoids wrinkling and reduces puncture site trauma
- Advanced engineering and special design of hemostatic valve maintains good hemostasis and facilitates smooth operation for guide wire and catheter
- Radiopaque sheath material facilitates visibility under fluoroscopy
- Various specifications and kit configurations available

### Exclusively for Radial introducer Sheath Set

- 20G I.V. cannula in set to reduce trauma, minimize blood loss and to provide fast hemostasis with a tourniquet
- Smooth kink-resistant guide wire for convenient handling

## KIT CONTENTS

- Introducer sheath, dilator, introducer needle, kink-resistant guide wire, scalpel and syringe

## DESIGNED FOR RADIAL ACCESS

| Catalogue No. | Size ( Fr.) | Length (cm) | Polymer Jacket Guidewire  | I.V. Cannula |
|---------------|-------------|-------------|---------------------------|--------------|
| BM-RA0407     | 4F          | 7           | 0.025" × 45cm<br>Straight | 20G × 32mm   |
| BM-RA0507     | 5F          | 7           |                           |              |
| BM-RA0607     | 6F          | 7           |                           |              |
| BM-RA0707     | 7F          | 7           |                           |              |
| BM-RA0411     | 4F          | 11          |                           |              |
| BM-RA0511     | 5F          | 11          |                           |              |
| BM-RA0611     | 6F          | 11          |                           |              |
| BM-RA0711     | 7F          | 11          |                           |              |
| BM-RA0416     | 4F          | 16          |                           |              |
| BM-RA0516     | 5F          | 16          |                           |              |
| BM-RA0616     | 6F          | 16          |                           |              |
| BM-RA0716     | 7F          | 16          |                           |              |

## DESIGNED FOR RADIAL ACCESS

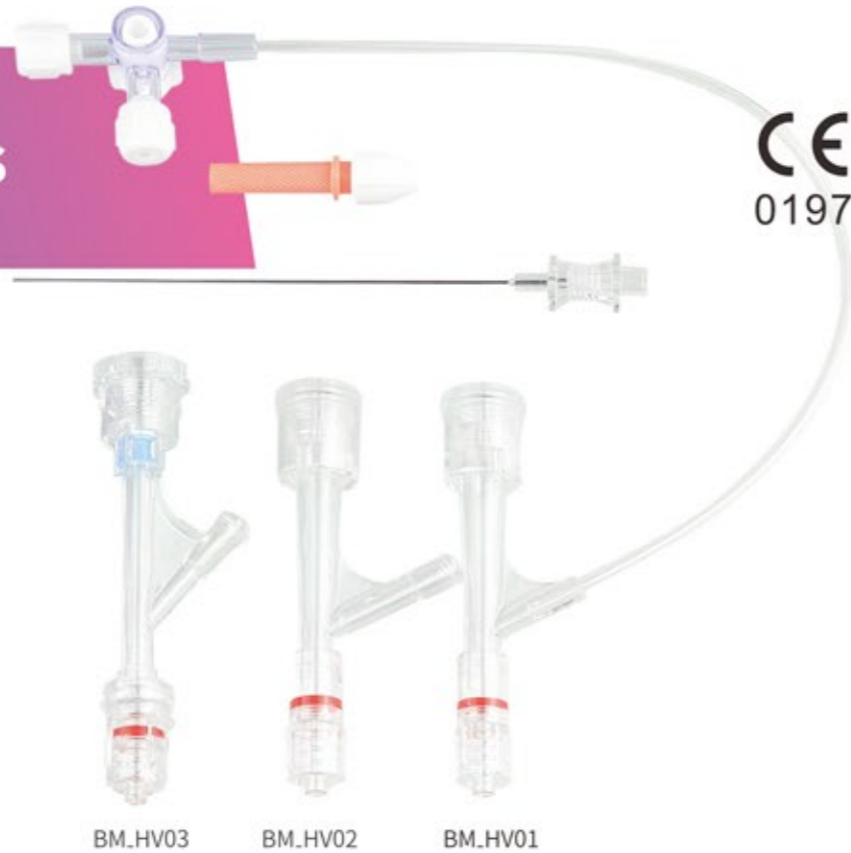
| Catalogue No. | Size (Fr.) | Length (cm) | Nitinol guide wire        | Introducer Needle |
|---------------|------------|-------------|---------------------------|-------------------|
| BM-RA0407B    | 4F         | 7           | 0.018" × 45cm<br>Straight | 21G × 40mm        |
| BM-RA0507B    | 5F         | 7           |                           |                   |
| BM-RA0607B    | 6F         | 7           |                           |                   |
| BM-RA0707B    | 7F         | 7           |                           |                   |
| BM-RA0411B    | 4F         | 11          |                           |                   |
| BM-RA0511B    | 5F         | 11          |                           |                   |
| BM-RA0611B    | 6F         | 11          |                           |                   |
| BM-RA0711B    | 7F         | 11          |                           |                   |

## DESIGNED FOR FEMORAL ACCESS

| Catalogue No. | Size (Fr.) | Length (cm) | Nitinol guide wire      | Introducer Needle |
|---------------|------------|-------------|-------------------------|-------------------|
| BM-FA0409A    | 4F         | 9           | 0.021" × 45cm Angled    | 20G × 38mm        |
| BM-FA0511A    | 5F         | 11          | 0.035" × 45cm<br>Angled |                   |
| BM-FA0611A    | 6F         | 11          |                         |                   |
| BM-FA0711A    | 7F         | 11          |                         |                   |
| BM-FA0811A    | 8F         | 11          |                         |                   |
| BM-FA0911A    | 9F         | 11          | 0.035" × 60cm<br>Angled | 18G × 65mm        |
| BM-FA0419A    | 4F         | 19          |                         |                   |
| BM-FA0523A    | 5F         | 23          |                         |                   |
| BM-FA0623A    | 6F         | 23          |                         |                   |
| BM-FA0723A    | 7F         | 23          |                         |                   |
| BM-FA0823A    | 8F         | 23          |                         |                   |
| BM-FA0923A    | 9F         | 23          |                         |                   |
| BM-FA0511D    | 5F         | 11          | 0.038" × 45cm<br>Angled |                   |
| BM-FA0611D    | 6F         | 11          |                         |                   |
| BM-FA0711D    | 7F         | 11          |                         |                   |
| BM-FA0811D    | 8F         | 11          |                         |                   |
| BM-FA0911D    | 9F         | 11          | 0.038" × 60cm<br>Angled |                   |
| BM-FA0419D    | 4F         | 19          |                         |                   |
| BM-FA0523D    | 5F         | 23          |                         |                   |
| BM-FA0623D    | 6F         | 23          |                         |                   |
| BM-FA0723D    | 7F         | 23          |                         |                   |
| BM-FA0823D    | 8F         | 23          |                         |                   |
| BM-FA0923D    | 9F         | 23          |                         |                   |

| Catalogue No. | Size (Fr.) | Length (cm) | Stainless steel guide wire | Introducer Needle |
|---------------|------------|-------------|----------------------------|-------------------|
| BM-FA0409     | 4F         | 9           | 0.021" × 45cm Angled       | 20G × 38mm        |
| BM-FA0511     | 5F         | 11          | 0.035" × 45cm<br>Angled    |                   |
| BM-FA0611     | 6F         | 11          |                            |                   |
| BM-FA0711     | 7F         | 11          |                            |                   |
| BM-FA0811     | 8F         | 11          |                            |                   |
| BM-FA0911     | 9F         | 11          | 0.035" × 60cm<br>Angled    | 18G × 65mm        |
| BM-FA0419     | 4F         | 19          |                            |                   |
| BM-FA0523     | 5F         | 23          |                            |                   |
| BM-FA0623     | 6F         | 23          |                            |                   |
| BM-FA0723     | 7F         | 23          |                            |                   |
| BM-FA0823     | 8F         | 23          |                            |                   |
| BM-FA0923     | 9F         | 23          |                            |                   |
| BM-FA0511B    | 5F         | 11          | 0.038" × 45cm<br>Angled    |                   |
| BM-FA0611B    | 6F         | 11          |                            |                   |
| BM-FA0711B    | 7F         | 11          |                            |                   |
| BM-FA0811B    | 8F         | 11          |                            |                   |
| BM-FA0911B    | 9F         | 11          | 0.038" × 60cm<br>Angled    |                   |
| BM-FA0419B    | 4F         | 19          |                            |                   |
| BM-FA0523B    | 5F         | 23          |                            |                   |
| BM-FA0623B    | 6F         | 23          |                            |                   |
| BM-FA0723B    | 7F         | 23          |                            |                   |
| BM-FA0823B    | 8F         | 23          |                            |                   |
| BM-FA0923B    | 9F         | 23          |                            |                   |

## Y Connector Sets



CE  
0197

### FEATURES

- Twist Model: easy to operate
- Push Pull Model: one-hand operation, quick hemostasis
- Good pressure resistance
- Various specifications meet the needs of clinical applications

### CONTENTS

- Y connector
- Torque device
- Guide wire insertion tool

### ORDERING INFORMATION

| Catalogue No. | Product description  |
|---------------|--|
| BM-HV01       | Twist Y conector   |
| BM-HV02       | Push pull Y conector                                       |
| BM-HV03       | Push pull Y conector with 25cm extension line and stopcock |
| BM-HV04       | Push pull Y conector with 45cm extension line and stopcock |

## Balloon Inflation Devices



CE  
0197

### INTRODUCTION

This product is used to control the inflation and deflation of various balloon catheters in minimally invasive interventional therapy or diagnostic surgery.

### PRODUCT FEATURES

- Ergonomic grip provides comfort and convenience
- Accurate pressure control
- Clock face is clear and easy to read

### ORDERING INFORMATION

| Catalogue No. | Volume (ml) | Pressure (ATM) |
|---------------|-------------|----------------|
| BM-BID-I30    | 20          | 30             |
| BM-BID-I30L   | 30          | 30             |
| BM-BID-II26   | 20          | 26             |
| BM-BID-II30   | 20          | 30             |
| BM-BID-III30  | 20          | 30             |

## Connecting Tubings



CE  
0197

### INTRODUCTION

The product is intended to connect pipelines and devices which provides pathway of the liquid-injection or/and invasive blood pressure monitoring in interventional operation.

### FEATURES

- High pressure resistance: 500psi/1200psi
- Transparent material makes the flow visible
- Customized sizes are available

### NON-BRAIDED TUBING

**500 PSI** female to male luer lock

| External OD (mm) | Length (cm)  |              |              |              |              |               |               |
|------------------|--------------|--------------|--------------|--------------|--------------|---------------|---------------|
|                  | 10           | 20           | 30           | 60           | 90           | 120           | 150           |
| 1.8              | BM-CT1.80-10 | BM-CT1.80-20 | BM-CT1.80-30 | BM-CT1.80-60 | BM-CT1.80-90 | BM-CT1.80-120 | BM-CT1.80-150 |
| 2.0              | BM-CT2.00-10 | BM-CT2.00-20 | BM-CT2.00-30 | BM-CT2.00-60 | BM-CT2.00-90 | BM-CT2.00-120 | BM-CT2.00-150 |
| 2.7              | BM-CT2.70-10 | BM-CT2.70-20 | BM-CT2.70-30 | BM-CT2.70-60 | BM-CT2.70-90 | BM-CT2.70-120 | BM-CT2.70-150 |
| 3.0              | BM-CT3.00-10 | BM-CT3.00-20 | BM-CT3.00-30 | BM-CT3.00-60 | BM-CT3.00-90 | BM-CT3.00-120 | BM-CT3.00-150 |
| 3.2              | BM-CT3.20-10 | BM-CT3.20-20 | BM-CT3.20-30 | BM-CT3.20-60 | BM-CT3.20-90 | BM-CT3.20-120 | BM-CT3.20-150 |
| 3.65             | BM-CT3.65-10 | BM-CT3.65-20 | BM-CT3.65-30 | BM-CT3.65-60 | BM-CT3.65-90 | BM-CT3.65-120 | BM-CT3.65-150 |
| 4.0              | BM-CT4.00-10 | BM-CT4.00-20 | BM-CT4.00-30 | BM-CT4.00-60 | BM-CT4.00-90 | BM-CT4.00-120 | BM-CT4.00-150 |

### BRAIDED TUBING

**1200 PSI** female luer lock to male rotator

| External OD (mm) | Length (cm)   |               |               |                |                |
|------------------|---------------|---------------|---------------|----------------|----------------|
|                  | 20            | 60            | 90            | 120            | 150            |
| 3.65             | BM-CT3.65-20B | BM-CT3.65-60B | BM-CT3.65-90B | BM-CT3.65-120B | BM-CT3.65-150B |

### NON-BRAIDED TUBING

**1200 PSI** female luer lock to male rotator

| External OD (mm) | Length (cm)   |               |               |                |                |
|------------------|---------------|---------------|---------------|----------------|----------------|
|                  | 20            | 60            | 90            | 120            | 150            |
| 3.20             | BM-CT3.20-20A | BM-CT3.20-60A | BM-CT3.20-90A | BM-CT3.20-120A | BM-CT3.20-150A |

## Introducer Needles



CE  
0197

### INTRODUCTION

- Puncture needle with excellent rigidity and corrosion resistance
- Sharp needle tip with low puncture force results in less pain for patients

### ORDERING INFORMATION

| Catalogue No. | Type                | Gauge | Length (cm) |
|---------------|---------------------|-------|-------------|
| BM-IN-1770    | Straight entry port | 17    | 7.0         |
| BM-IN-1865    | Straight entry port | 18    | 6.5         |
| BM-IN-1870    | Straight entry port | 18    | 7.0         |
| BM-IN-2038    | Straight entry port | 20    | 3.8         |
| BM-IN-2138    | Straight entry port | 21    | 3.8         |
| BM-IN-2150    | Straight entry port | 21    | 5.0         |
| BM-IN-2170    | Straight entry port | 21    | 7.0         |
| BM-INY-1865   | Y type entry port   | 18    | 6.5         |
| BM-INY-1870   | Y type entry port   | 18    | 7.0         |
| BM-INY-2038   | Y type entry port   | 20    | 3.8         |
| BM-INY-2138   | Y type entry port   | 21    | 3.8         |
| BM-INY-2150   | Y type entry port   | 21    | 5.0         |
| BM-INY-2170   | Y type entry port   | 21    | 7.0         |

# Manifolds



## FEATURES

- Compatible with most infusion pumps, syringes and intravenous infusion tubes to meet complex clinical needs
- Excellent pressure resistance and sealing performance
- Leak free and smooth handling
- On / Off types are available for different user habits

## ONE PORT

| Catalogue No. | Product description/Pressure |
|---------------|------------------------------|
| BM-MF1-ON     | "ON" 500psi                  |
| BM-MF1-OFF    | "OFF" 500psi                 |

## TWO PORTS

| Catalogue No. | Product description/Pressure |
|---------------|------------------------------|
| BM-MF2-ON     | "ON" 500psi                  |
| BM-MF2-OFF    | "OFF" 500psi                 |

## THREE PORTS

| Catalogue No. | Product description/Pressure |
|---------------|------------------------------|
| BM-MF3-ON     | "ON" 500psi                  |
| BM-MF3-OFF    | "OFF" 500psi                 |

# Radial Artery Tourniquets



BM-RAT1



BM-RAT2

CE 0197

## INTRODUCTION

The device is used to achieve hemostasis after the radial arterial catheterization.

## FEATURES

- Unique design for radial artery hemostasis post percutaneous puncture
- Transparent fixed plates ensures clear visual control
- Soft and comfortable adjustable band

## COMPOSITION

The device consists of a fixed plate, adjustable band and elastomer

| Catalogue No. | Product description |
|---------------|---------------------|
| BM-RAT1       | Cord button         |
| BM-RAT2       | Rotary              |

# Dose-Control Syringes

CE  
0197



## INTRODUCTION

The device is intended to contrast agents and solution manually injection in micro trauma interventional therapy or diagnostic surgery.

## FEATURES

- Easy to operate with one hand
- Clear scale and accurate measurement of infusion volume

## ORDERING INFORMATION

| Catalogue No. | Nominal Capacity (ml) | Connector Type |
|---------------|-----------------------|----------------|
| BM-DCS10      | 10                    | Rotating       |
| BM-DCS12      | 12                    | Rotating       |

# Angiographic Syringe & Accessories

CE  
0197



## FEATURES

- Excellent sealing of plunger and unique push button facilitates handling
- Clear scale and accurate control
- Broad variety of angiographic syringes and accessories

## SET CONTENTS

- Single Syringe Set for CT/MRI
  - 1\* Syringe
  - 1\* Coiled Tubing
  - 1\* Quick Fill Tube (J Tube)
- Single Syringe Set for DSA
  - 1\* Syringe
  - 1\* Quick Fill Tube (J Tube)
- Dual Syringe Set
  - 2\* Syringe
  - 1\* Y tube with Valve
  - 1\* Quick Fill Tube (J Tube)
  - 1\* Spike

## MEDRAD(A)

| Injector                    | Compatible Models                                    | Syringe Set            | Volume (ml) | Catalogue No.         |                      |
|-----------------------------|--|------------------------|-------------|-----------------------|----------------------|
| CT                          | MCT & PLUS; OP-100; VCT610; ECT710, Vistron, EnVison | Single                 | 200         | BM-AS-CT-200-A01      |                      |
|                             |  | Dual                   | 200/200     | BM-AS-CT-200/200-A02  |                      |
|                             | STELLANT   | Single                 | 200         | BM-AS-CT-200-A03      |                      |
|                             |  | Dual                   | 200/200     | BM-AS-CT-200/200-A04  |                      |
|                             | SALIENT  | Single                 | 190         | BM-AS-CT-190-A05      |                      |
|                             |  | Dual                   | 190/190     | BM-AS-CT-190/190-A06  |                      |
|                             | Multi-Patient syringe system Stellant (12 hours)     |                        | Dual        | 200/200               | BM-AS-CT-200/200-A08 |
|                             | DSA  | Mark V & Mark V Provis | Single      | 150                   | BM-AS-DSA-150-A01    |
| Single                      |  |                        | 200         | BM-AS-DSA-200-A03     |                      |
| Single                      |  |                        | 60          | BM-AS-DSA-60-A05      |                      |
| Mark III & Mark IV & Mark V |  | Single                 | 130         | BM-AS-DSA-130-A07     |                      |
|                             |  | Single                 | 150         | BM-AS-DSA-150-A09     |                      |
| MRI                         | Spectris & Solaris                                   | Dual                   | 65/65       | BM-AS-MRI-65/65-A02   |                      |
|                             |  | Dual                   | 115/115     | BM-AS-MRI-115/115-A04 |                      |
|                             |  | Dual                   | 65/115      | BM-AS-MRI-65/115-A06  |                      |

## LIBEL-FLARSHEIM(B)

| Injector | Compatible Models                  | Syringe Set | Volume (ml) | Catalogue No.        |
|----------|------------------------------------|-------------|-------------|----------------------|
| CT       | CT 9000 & CT 9000 ADV, Optivantage | Single      | 200         | BM-AS-CT-200-B01     |
|          |                                    | Dual        | 200/200     | BM-AS-CT-200/200-B02 |
| DSA      | Angiomat 6000                      | Single      | 150         | BM-AS-DSA-150-B01    |
|          | Angiomat Illumena                  | Single      | 150         | BM-AS-DSA-150-B03    |
| MRI      | Optistar LE, Elite                 | Single      | 60          | BM-AS-MRI-60-B01     |
|          |                                    | Dual        | 60/60       | BM-AS-MRI-60/60-B02  |

## EZEM(C)

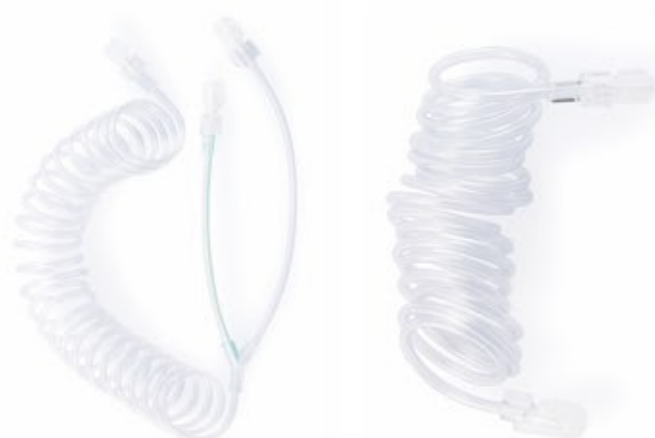
| Injector | Compatible Models              | Syringe Set | Volume (ml) | Catalogue No.        |
|----------|--------------------------------|-------------|-------------|----------------------|
| CT       | Empower, EmpowerCT, EmpowerCTA | Single      | 200         | BM-AS-CT-200-C01     |
|          |                                | Dual        | 200/200     | BM-AS-CT-200/200-C02 |

## NEMOTO KYORINDO(D)

| Injector | Compatible Models               | Syringe Set | Volume (ml) | Catalogue No.        |
|----------|---------------------------------|-------------|-------------|----------------------|
| CT       | A-25                            | Dual        | 100/200     | BM-AS-CT-100/200-D02 |
|          |                                 | Single      | 100         | BM-AS-CT-100-D01     |
|          | A-25, A-60                      | Single      | 200         | BM-AS-CT-200-D03     |
|          |                                 | Dual        | 100/100     | BM-AS-CT-100/100-D04 |
|          |                                 | Dual        | 200/200     | BM-AS-CT-200/200-D06 |
|          |                                 | Dual        | 60/200      | BM-AS-CT-60/200-D08  |
| DSA      | Nemoto 120S                     | Single      | 120         | BM-AS-DSA-120-D01    |
| MRI      | Nemoto Dual Shot. Sonic Shot 50 | Single      | 60          | BM-AS-MRI-60-D01     |
|          |                                 | Dual        | 60/60       | BM-AS-MRI-60/60-D02  |

## MEDTRON(E)

| Injector | Compatible Models | Syringe Set | Volume (ml) | Catalogue No.        |
|----------|-------------------|-------------|-------------|----------------------|
| CT       | ACCUTRON          | Single      | 200         | BM-AS-CT-200-E01     |
|          |                   | Dual        | 200/200     | BM-AS-CT-200/200-E02 |
| MRI      | ACCUTRON          | Single      | 65          | BM-AS-MRI-65-E01     |
|          |                   | Dual        | 65/65       | BM-AS-MRI-65/65-E02  |
|          |                   | Dual        | 65/200      | BM-AS-MRI-65/200-E04 |



| Description   | Length(cm) | Catalogue No.   |
|---------------|------------|-----------------|
| Coiled tube   | 50         | BM-CT3.2-50SC0  |
| Coiled tube   | 100        | BM-CT3.2-100SC0 |
| Coiled tube   | 150        | BM-CT3.2-150SC0 |
| Straight tube | 20         | BM-CT3.2-20SS0  |
| Straight tube | 150        | BM-CT3.2-150SS0 |